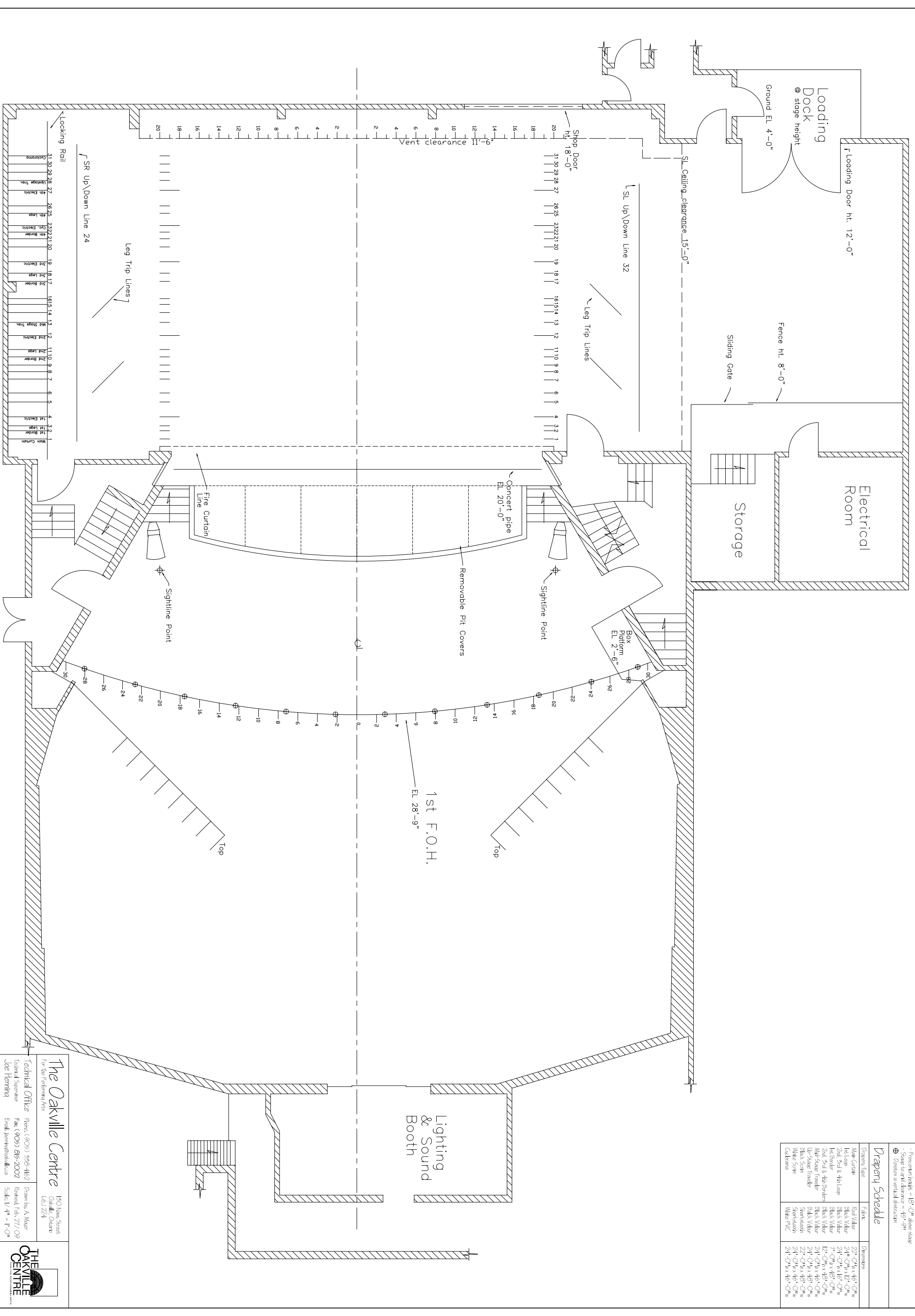


Notes

- Proscenium height = 13'-0" above stage
- Stage to grid clearance = 43'-9"
- ⊕ - Random a vertical distribution

Drapery Schedule

Draperies Type	Fabric	Dimensions
Main Curtain	Red Vitor	22' 0" x 141'-0"
Leg Trip	Black Vitor	24' 0" x 12'-0"
Leg Trip 2nd & 4th Legs	Black Vitor	24' 0" x 12'-0"
2nd Stage Travels	Black Vitor	24' 0" x 141'-0"
Mid-Stage Travels	Black Vitor	24' 0" x 141'-0"
1st-Stage Travels	Black Vitor	24' 0" x 141'-0"
Black Scrim	Black Scrim	24' 0" x 141'-0"
White Scrim	White Scrim	24' 0" x 141'-0"
Calumna	White PVC	24' 0" x 141'-0"



The Oakville Centre
 For the Performing Arts
 190 New Street
 Oakville, Ontario
 L6J 2Z4

Technical Office
 Joe Fleming
 Phone: (905) 595-4152
 Fax: (905) 819-2002
 Email: jofleming@oakville.ca

Drawn by: A. Mauer
 Revised: Feb. 27/09
 Scale: 1/4" = 1'-0"

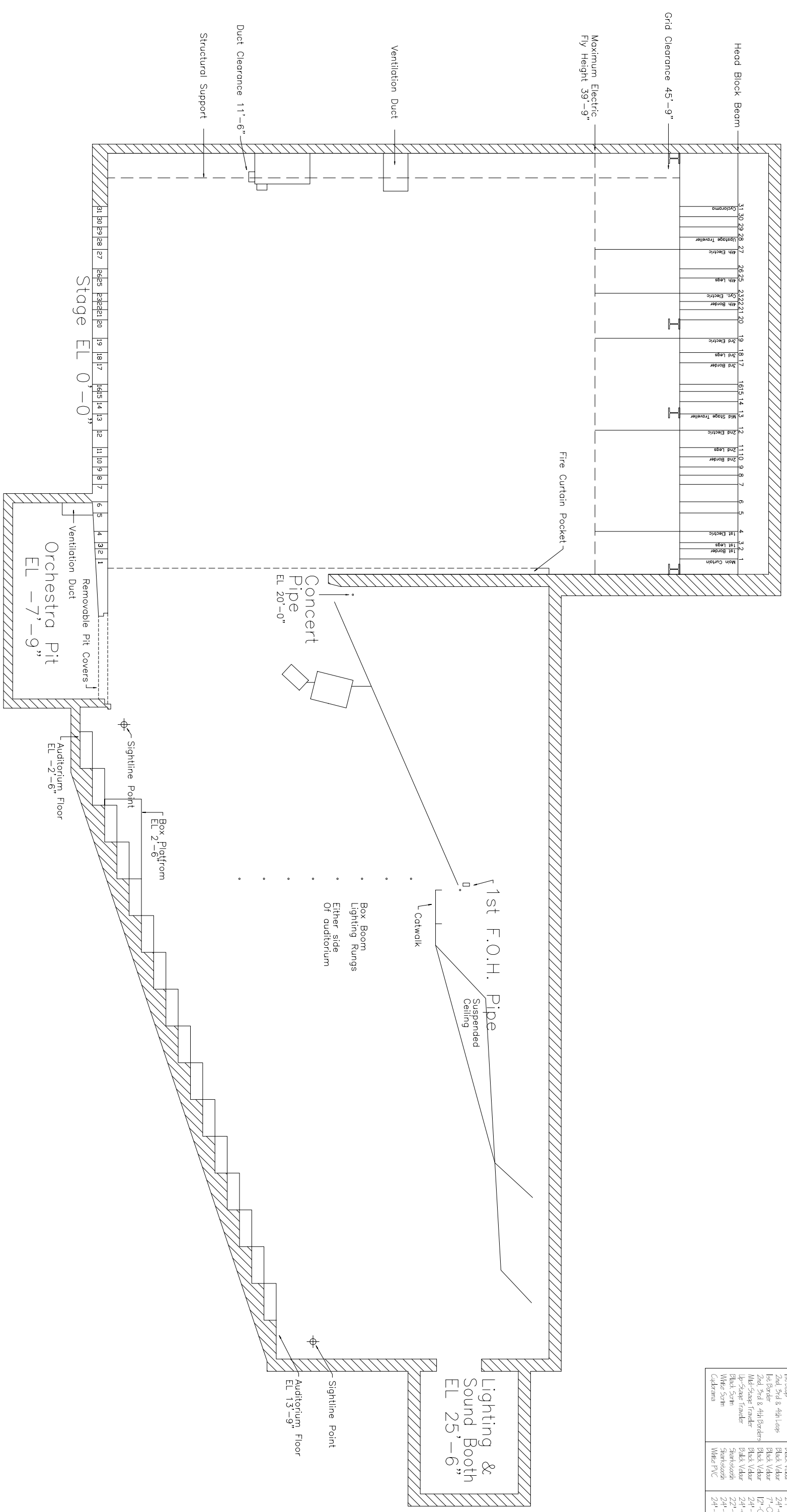
THE OAKVILLE CENTRE

Theatre Plan
 Drawing #1

Notes
 - All elevations taken from stage level
 - Proscenium height = 18'-0" above stage
 - Stage to grid clearance = 45'-9"

Drapery Schedule

Drapery Type	Fabric	Dimensions
Main Curtain	Red Velour	22'-0" H x 46'-0" W
1st Lapse	Black Velour	24'-0" H x 12'-0" W
2nd, 3rd & 4th Lapse	Black Velour	24'-0" H x 16'-0" W
1st Border	Black Velour	7'-0" H x 48'-0" W
2nd, 3rd & 4th Borders	Black Velour	12'-0" H x 48'-0" W
Mid-Stage Traveler	Black Velour	24'-0" H x 46'-0" W
Up-Stage Traveler	Black Velour	24'-0" H x 48'-0" W
Black Scrim	Stanssloth	22'-0" H x 48'-0" W
White Scrim	Stanssloth	24'-0" H x 48'-0" W
Childrama	White PVC	24'-0" H x 46'-0" W



The Oakville Centre
 For The Performing Arts
 150 Nain Street
 Oakville, Ontario
 L6J 2Z4

Technical Office Phone: (905) 558-4162
 Technical Supervisor Fax: (905) 815-2002
 Joe Henning Email: jhenning@oakville.ca

Drawn by: A. Woyar
 Revised: Feb. 27 / 09
 Scale: 1/4" = 1'-0"

THE OAKVILLE CENTRE
 THEATRE SECTION