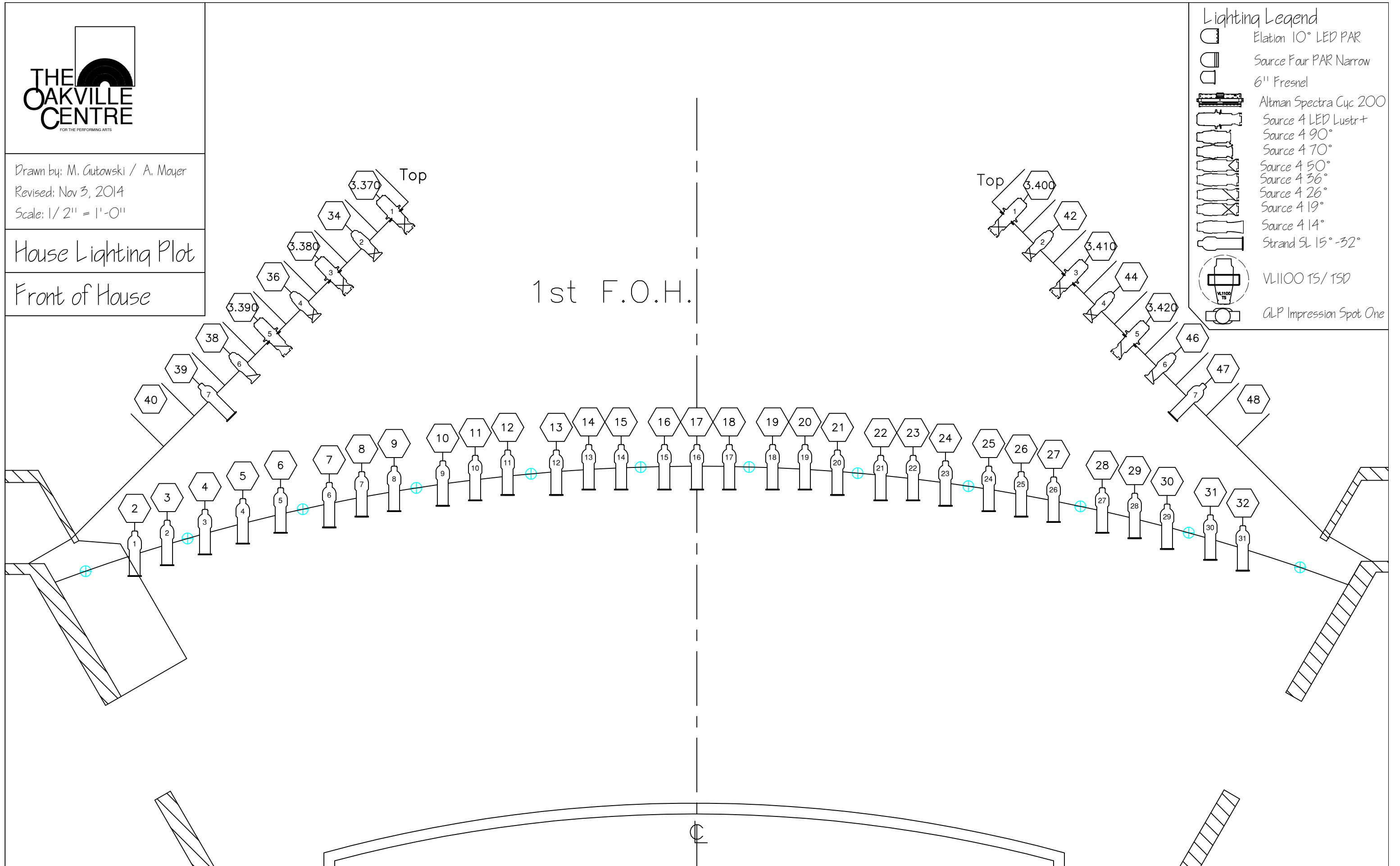




Drawn by: M. Gutowski / A. Mayer
Revised: Nov 3, 2014
Scale: 1/2" = 1'-0"

House Lighting Plot

Front of House



- ### Lighting Legend
- Elation 10° LED PAR
 - Source Four PAR Narrow
 - 6" Fresnel
 - Altman Spectra Cyc 200
 - Source 4 LED Lustr+
 - Source 4 90°
 - Source 4 70°
 - Source 4 50°
 - Source 4 36°
 - Source 4 26°
 - Source 4 19°
 - Source 4 14°
 - Strand SL 15°-32°
 - VL1100 15/15D
 - GLP Impression Spot One



Technical Office

Supervisor of Technical Services

Sean Lett

Phone: (905) 338-4162

Fax: (905) 815-2002

Email: slett@oakville.ca

Drawn by: M. Gutowski

Dec 3 2016

Scale: 1/2" = 1'-0"

House Lighting Plot

Stage

Lighting Legend

Colorado 2-Quad Z Tour

Source Four PAR Narrow

6" Fresnel

Altman Spectra Cyc 200

Source 4 LED Lustr+

Source 4 90°

Source 4 70°

Source 4 50°

Source 4 36°

Source 4 26°

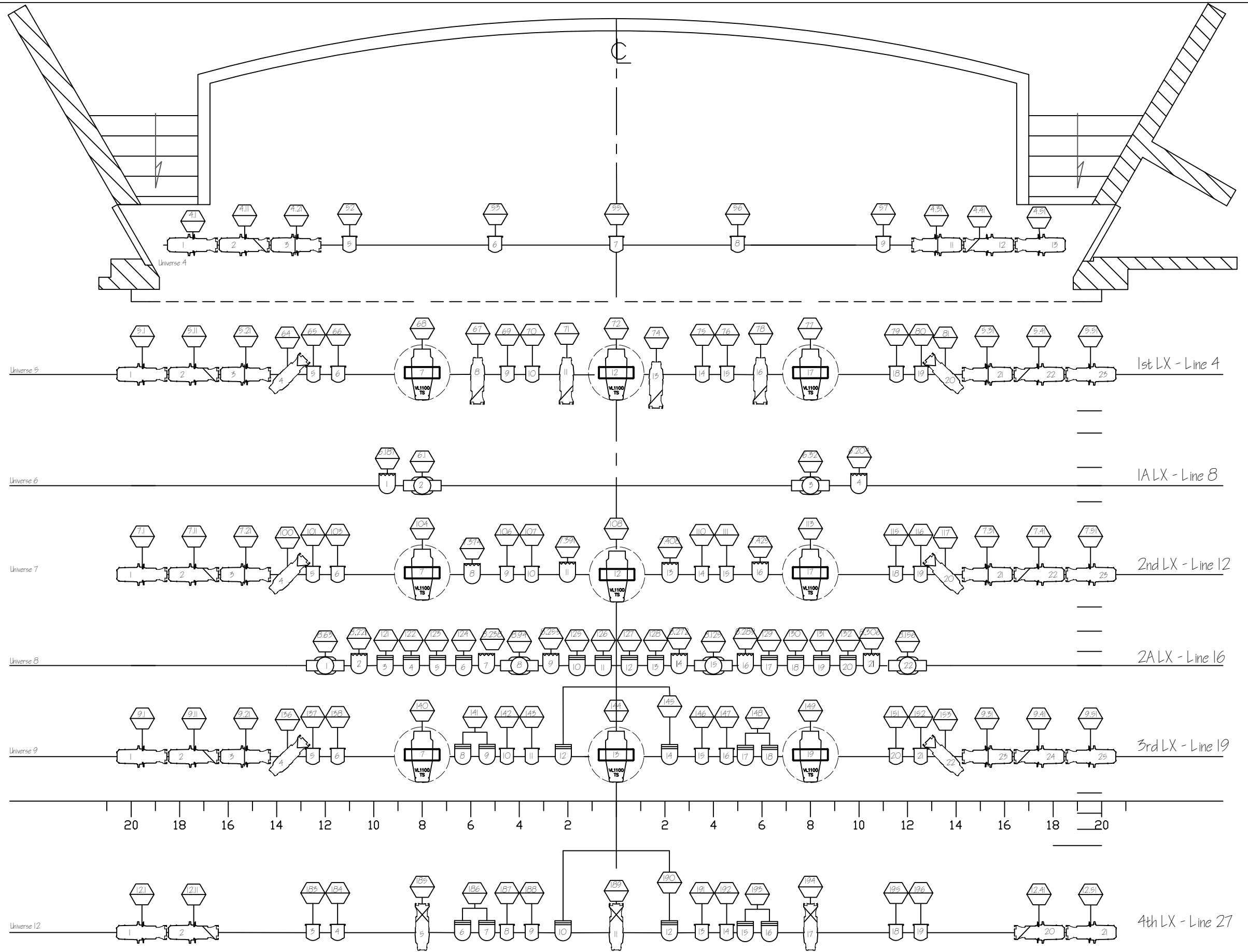
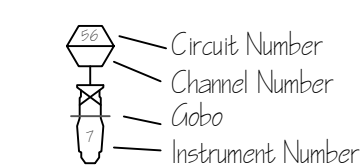
Source 4 19°

Source 4 14°

Strand SL 15°-32°

VL1100 TS/TSO

ALP Impression Spot One



Channel	Dimmers	Instrument	Gel	Location	Focus
1	29	1 @ Strand Zoom 15°-32°		FOH #1	Wash warm SR
2	24	1 @ Strand Zoom 15°-32°		FOH #1	Wash warm MSR
3	18	1 @ Strand Zoom 15°-32°		FOH #1	Wash warm C
4	12	1 @ Strand Zoom 15°-32°		FOH #1	Wash warm MSL
5	6	1 @ Strand Zoom 15°-32°		FOH #1	Wash warm SL
6	28	1 @ Strand Zoom 15°-32°		FOH #1	Wash cool SR
7	22	1 @ Strand Zoom 15°-32°		FOH #1	Wash cool MSR
8	16	1 @ Strand Zoom 15°-32°		FOH #1	Wash cool C
9	10	1 @ Strand Zoom 15°-32°		FOH #1	Wash cool MSL
10	5	1 @ Strand Zoom 15°-32°		FOH #1	Wash cool SL
11	3.400	1 @ 19° S4 Lustr+		Box Boom	Box Boom LED HL High
12	3.410	1 @ 19° S4 Lustr+		Box Boom	Box Boom LED HL Mid
13	3.420	1 @ 26° S4 Lustr+		Box Boom	Box Boom LED HL Low
14	3.370	1 @ 19° S4 Lustr+		Box Boom	Box Boom LED HR High
15	3.380	1 @ 19° S4 Lustr+		Box Boom	Box Boom LED HR Mid
16	3.390	1 @ 26° S4 Lustr+		Box Boom	Box Boom LED HR Low
17	42	1 @ 19° S4		Box Boom	Box Boom Warm HL High
18	44	1 @ 19° S4		Box Boom	Box Boom Warm HL Mid
19	46	1 @ 26° S4		Box Boom	Box Boom Warm HL Low
20	34	1 @ 19° S4		Box Boom	Box Boom Warm HR High
21	36	1 @ 19° S4		Box Boom	Box Boom Warm HR Mid
22	38	1 @ 26° S4		Box Boom	Box Boom Warm HR Low
23	47	1 @ 26° S4		Box Boom	Bottom Rung Spec
24	39	1 @ 26° S4		Box Boom	Bottom Rung Spec
25	2.343	1 @ Varilite TSD		FOH #1A	FOH HR VL Face
26	2.316	1 @ Varilite TSD		FOH #1A	FOH C VL Face
27	2.289	1 @ Varilite TSD		FOH #1A	FOH HL VL Face
28					
29					
30					
31	27	1 @ Strand Zoom 15°-32°		FOH #1	Face Special 1 SR
32	25	1 @ Strand Zoom 15°-32°		FOH #1	Face Special 2
33	23	1 @ Strand Zoom 15°-32°		FOH #1	Face Special 3
34	21	1 @ Strand Zoom 15°-32°		FOH #1	Face Special 4
35	20	1 @ Strand Zoom 15°-32°		FOH #1	Face Special 5
36	19	1 @ Strand Zoom 15°-32°		FOH #1	Face Special 6
37	17	1 @ Strand Zoom 15°-32°		FOH #1	Face Special 7 CS
38	15	1 @ Strand Zoom 15°-32°		FOH #1	Face Special 8
39	14	1 @ Strand Zoom 15°-32°		FOH #1	Face Special 9
40	13	1 @ Strand Zoom 15°-32°		FOH #1	Face Special 10

41	11	1 @ Strand Zoom 15°-32°		FOH #1	Face Special 11
42	9	1 @ Strand Zoom 15°-32°		FOH #1	Face Special 12
43	8	1 @ Strand Zoom 15°-32°		FOH #1	Face Special 13
44	7	1 @ Strand Zoom 15°-32°		FOH #1	Face Special 14SL
45	78	1 @ 26° S4		1st LX	Face Special USR
46	74	1 @ 26° S4		1st LX	Face Special USRC
47	71	1 @ 26° S4		1st LX	Face Special USLC
48	67	1 @ 26° S4		1st LX	Face Special USL
49					
50					
51	4.51	1 @ 36° S4 Lustr+		Concert Pipe	CP Tip SR Offstage
52	4.41	1 @ 26° S4 Lustr+		Concert Pipe	CP Tip SR Onstage
53	5.51	1 @ 36° S4 Lustr+		1st LX	1st Tip SR Offstage
54	5.41	1 @ 26° S4 Lustr+		1st LX	1st Tip SR Onstage
55	7.51	1 @ 36° S4 Lustr+		2nd LX	2nd Tip SR Offstage
56	7.41	1 @ 26° S4 Lustr+		2nd LX	2nd Tip SR Onstage
57	9.51	1 @ 36° S4 Lustr+		3rd LX	3rd Tip SR Offstage
58	9.41	1 @ 26° S4 Lustr+		3rd LX	3rd Tip SR Onstage
59	12.51	1 @ 36° S4 Lustr+		4th LX	4th Tip SR Offstage
60	12.41	1 @ 26° S4 Lustr+		4th LX	4th Tip SR Onstage
61	4.11	1 @ 26° S4 Lustr+		Concert Pipe	CP Tip SL Onstage
62	4.1	1 @ 36° S4 Lustr+		Concert Pipe	CP Tip SL Offstage
63	5.11	1 @ 26° S4 Lustr+		1st LX	1st Tip SL Onstage
64	5.1	1 @ 36° S4 Lustr+		1st LX	1st Tip SL Offstage
65	7.11	1 @ 26° S4 Lustr+		2nd LX	2nd Tip SL Onstage
66	7.1	1 @ 36° S4 Lustr+		2nd LX	2nd Tip SL Offstage
67	9.11	1 @ 26° S4 Lustr+		3rd LX	3rd Tip SL Onstage
68	9.1	1 @ 36° S4 Lustr+		3rd LX	3rd Tip SL Offstage
69	12.11	1 @ 26° S4 Lustr+		4th LX	4th Tip SL Onstage
70	12.1	1 @ 36° S4 Lustr+		4th LX	4th Tip SL Offstage
71	4.31	1 @ 36° S4 Lustr+		Concert Pipe	CP B/U SR
72	5.31	1 @ 36° S4 Lustr+		1st LX	1st B/U SR
73	7.31	1 @ 36° S4 Lustr+		2nd LX	2nd B/U SR
74	9.31	1 @ 36° S4 Lustr+		3rd LX	3rd B/U SR
75	4.21	1 @ 36° S4 Lustr+		Concert Pipe	CP B/U SL
76	5.21	1 @ 36° S4 Lustr+		1st LX	1st B/U SL
77	7.21	1 @ 36° S4 Lustr+		2nd LX	2nd B/U SL
78	9.21	1 @ 36° S4 Lustr+		3rd LX	3rd B/U SL
79					
80					

81	81	1 @ 50° S4		1st LX	1st 50 DSR
82	117	1 @ 50° S4		2nd LX	2nd 50 MSR
83	153	1 @ 50° S4		3rd LX	3rd 50 USR
84	64	1 @ 50° S4		1st LX	1st 50 DSL
85	100	1 @ 50° S4		2nd LX	2nd 50 MSL
86	136	1 @ 50° S4		3rd LX	3rd 50 USL
87	194	1 @ 19° S4		4th LX	USR Back Special USR
88	189	1 @ 19° S4		4th LX	USC Back Special USC
89	185	1 @ 19° S4		4th LX	USL Back Special USL
90					
91	80	1 @ 6" Fresnels	V99	1st LX	1st Warm Back SR
92	76	1 @ 6" Fresnels	V99	1st LX	1st Warm Back CSR
93	70	1 @ 6" Fresnels	V99	1st LX	1st Warm Back CSL
94	66	1 @ 6" Fresnels	V99	1st LX	1st Warm Back SL
95	116	1 @ 6" Fresnels	V99	2nd LX	2nd Warm Back SR
96	111	1 @ 6" Fresnels	V99	2nd LX	2nd Warm Back CSR
97	107	1 @ 6" Fresnels	V99	2nd LX	2nd Warm Back CSL
98	102-103 Temp	1 @ 6" Fresnels	V99	2nd LX	2nd Warm Back SL
99	152	1 @ 6" Fresnels	V99	3rd LX	3rd Warm Back SR
100	147	1 @ 6" Fresnels	V99	3rd LX	3rd Warm Back CSR
101	143	1 @ 6" Fresnels	V99	3rd LX	3rd Warm Back CSL
102	138	1 @ 6" Fresnels	V99	3rd LX	3rd Warm Back SL
103	196	1 @ 6" Fresnels	V99	4th LX	4th Warm Back SR
104	192	1 @ 6" Fresnels	V99	4th LX	4th Warm Back CSR
105	188	1 @ 6" Fresnels	V99	4th LX	4th Warm Back CSL
106	184	1 @ 6" Fresnels	V99	4th LX	4th Warm Back SL
107					
108					
109					
110					
111	79	1 @ 6" Fresnels	V99	1st LX	1st Cool Back SR
112	75	1 @ 6" Fresnels	V99	1st LX	1st Cool Back CSR
113	69	1 @ 6" Fresnels	V99	1st LX	1st Cool Back CSL
114	65	1 @ 6" Fresnels	V99	1st LX	1st Cool Back SL
115	115	1 @ 6" Fresnels	V99	2nd LX	2nd Cool Back SR
116	110	1 @ 6" Fresnels	V99	2nd LX	2nd Cool Back CSR
117	106	1 @ 6" Fresnels	V99	2nd LX	2nd Cool Back CSL
118	101	1 @ 6" Fresnels	V99	2nd LX	2nd Cool Back SL
119	151	1 @ 6" Fresnels	V99	3rd LX	3rd Cool Back SR
120	146	1 @ 6" Fresnels	V99	3rd LX	3rd Cool Back CSR

121	142	1 @ 6" Fresnels	V99	3rd LX	3rd Cool Back CSL
122	137	1 @ 6" Fresnels	V99	3rd LX	3rd Cool Back SL
123	195	1 @ 6" Fresnels	V99	4th LX	4th Cool Back SR
124	191	1 @ 6" Fresnels	V99	4th LX	4th Cool Back CSR
125	187	1 @ 6" Fresnels	V99	4th LX	4th Cool Back CSL
126	183	1 @ 6" Fresnels	V99	4th LX	4th Cool Back SL
127					
128					
129					
130					
131	131, 130	1 @ S4 Par - Narrow		Line 16	Pars 1 SR
132	127, 126	1 @ S4 Par - Narrow		Line 16	Pars 1 MSR
133	123, 122	1 @ S4 Par - Narrow		Line 16	Pars 1 CSR
134					
135					
136					
137	132, 129	1 @ S4 Par - Narrow		Line 16	Pars 2 SR
138	128, 125	1 @ S4 Par - Narrow		Line 16	Pars 2 MSR
139	124, 121	1 @ S4 Par - Narrow		Line 16	Pars 2 CSR
140					
141					
142					
143	141	1 @ S4 Par - Narrow		3rd LX	Pars 3 SR
144	145	1 @ S4 Par - Narrow		3rd LX	Pars 3 MSR
145	148	1 @ S4 Par - Narrow		3rd LX	Pars 3 CSR
146					
147					
148					
149	186	1 @ S4 Par - Narrow		4th LX	Pars 4 SR
150	190	1 @ S4 Par - Narrow		4th LX	Pars 4 MSR
151	193	1 @ S4 Par - Narrow		4th LX	Pars 4 CSR
152					
153					
154					
155					
156					
157					
158					
159					
160					

161	6.204	1 @ Chauvet COLORado 2-Quad Z Tour	LED	1A	LED Pars SR
162	6.187	1 @ Chauvet COLORado 2-Quad Z Tour	LED	1A	LED Pars SL
163	7.425	1 @ Chauvet COLORado 2-Quad Z Tour	LED	2nd LX	LED Pars SR
164	7.408	1 @ Chauvet COLORado 2-Quad Z Tour	LED	2nd LX	LED Pars CSR
165	7.391	1 @ Chauvet COLORado 2-Quad Z Tour	LED	2nd LX	LED Pars CSL
166	7.374	1 @ Chauvet COLORado 2-Quad Z Tour	LED	2nd LX	LED Pars SL
167	8.306	1 @ Chauvet COLORado 2-Quad Z Tour	LED	2A	LED Pars SR
168	8.289	1 @ Chauvet COLORado 2-Quad Z Tour	LED	2A	LED Pars MSR
169	8.272	1 @ Chauvet COLORado 2-Quad Z Tour	LED	2A	LED Pars CSR
170	8.255	1 @ Chauvet COLORado 2-Quad Z Tour	LED	2A	LED Pars CSL
171	8.238	1 @ Chauvet COLORado 2-Quad Z Tour	LED	2A	LED Pars MSL
172	8.221	1 @ Chauvet COLORado 2-Quad Z Tour	LED	2A	LED Pars SL
173					
174					
175					
176					
177					
178					
179					
180					
181	13.78	1 @ Opti Quad Par 7 Channel	LED	Deck	LED Pars Deck
182	13.71	1 @ Opti Quad Par 7 Channel	LED	Deck	LED Pars Deck
183	13.64	1 @ Opti Quad Par 7 Channel	LED	Deck	LED Pars Deck
184	13.57	1 @ Opti Quad Par 7 Channel	LED	Deck	LED Pars Deck
185	13.5	1 @ Opti Quad Par 7 Channel	LED	Deck	LED Pars Deck
186	13.43	1 @ Opti Quad Par 7 Channel	LED	Deck	LED Pars Deck
187	13.36	1 @ Opti Quad Par 7 Channel	LED	Deck	LED Pars Deck
188	13.29	1 @ Opti Quad Par 7 Channel	LED	Deck	LED Pars Deck
189	13.22	1 @ Opti Quad Par 7 Channel	LED	Deck	LED Pars Deck
190	13.15	1 @ Opti Quad Par 7 Channel	LED	Deck	LED Pars Deck
191	13.8	1 @ Opti Quad Par 7 Channel	LED	Deck	LED Pars Deck
192	13.1	1 @ Opti Quad Par 7 Channel	LED	Deck	LED Pars Deck
193					
194					
195					
196					
197					
198					
199					
200					

201	5.145 + 1.77	1 @ Varilite TS	RGB	1st LX	Back Special 1 DSR
202	5.118 + 1.72	1 @ Varilite TS	RGB	1st LX	Back Special 2 DSC
203	5.91 + 1.68	1 @ Varilite TS	RGB	1st LX	Back Special 3 DSL
204	7.226 + 1.113	1 @ Varilite TS	RGB	2nd LX	Back Special 4 MSR
205	7.199 + 1.108	1 @ Varilite TS	RGB	2nd LX	Back Special 5 MSC
206	7.172 + 1.104	1 @ Varilite TS	RGB	2nd LX	Back Special 6 MSL
207	9.307 + 1.149	1 @ Varilite TS	RGB	3rd LX	Back Special 7 USR
208	9.280 + 1.144	1 @ Varilite TS	RGB	3rd LX	Back Special 8 USC
209	9.253 + 1.140	1 @ Varilite TS	RGB	3rd LX	Back Special 9 USL
210					
211	6.32	1 @ Impression Spot One	LED	Line 8	GLP #2 DSR
212	6.1	1 @ Impression Spot One	LED	Line 8	GLP #1 DSL
213	8.156	1 @ Impression Spot One	LED	Line 16	GLP #6 USR
214	8.125	1 @ Impression Spot One	LED	Line 16	GLP #5 UMSR
215	8.94	1 @ Impression Spot One	LED	Line 16	GLP #4 UMSL
216	8.63	1 @ Impression Spot One	LED	Line 16	GLP #3 USL
217					
218					
219					
220					
221	271, 276, 281	6 @ Altman FC1	RGB	Deck	Groundrow SR
222	270, 275, 280	6 @ Altman FC1	RGB	Deck	Groundrow CSR
223	269, 274, 279	6 @ Altman FC1	RGB	Deck	Groundrow CS
224	268, 273, 278	6 @ Altman FC1	RGB	Deck	Groundrow CSL
225	267, 272, 277	3 @ Altman FC1	RGB	Deck	Groundrow SL
226					
227					
228					
229					
230					
231	177, 178, 179, 180	8 @ Iris	RGBA	Cyc LX	Top Cyc SR
232	173, 174, 175, 176	8 @ Iris	RGBA	Cyc LX	Top Cyc C
233	169, 170, 171, 172	8 @ Iris	RGBA	Cyc LX	Top Cyc SL
234					
235					
236					
237					
238					
239					
240					

241	13.245	1 @ Spectra 100 Cyc	LED	Deck	LED Ground Row SR
242	13.235	1 @ Spectra 100 Cyc	LED	Deck	LED Ground Row MSR
243	13.225	1 @ Spectra 100 Cyc	LED	Deck	LED Ground Row CMSR
244	13.215	1 @ Spectra 100 Cyc	LED	Deck	LED Ground Row CSR
245	13.205	1 @ Spectra 100 Cyc	LED	Deck	LED Ground Row CSL
246	13.195	1 @ Spectra 100 Cyc	LED	Deck	LED Ground Row CMSL
247	13.185	1 @ Spectra 100 Cyc	LED	Deck	LED Ground Row MSL
248	13.175	1 @ Spectra 100 Cyc	LED	Deck	LED Ground Row SL
249					
250					
251	11.366	1 @ Spectra 200 cyc	LED	Cyc LX	LED CYC SR
252	11.358	1 @ Spectra 200 cyc	LED	Cyc LX	LED CYC MSR
253	11.350	1 @ Spectra 200 cyc	LED	Cyc LX	LED CYC C
254	11.342	1 @ Spectra 200 cyc	LED	Cyc LX	LED CYC MSL
255	11.334	1 @ Spectra 200 cyc	LED	Cyc LX	LED CYC SL
256					
257					
258					
259					
260					
261					
262					
263					
264					
265					
266					
267					
268					
269					
270					
271					
272					
273					
274					
275					
276					
277					
278					
279					
280					

281	26	1 @ Strand Zoom 15°-32°		FOH #1	M/C Special SR
282	52, 53, 55, 56, 57	5 @ 6" Fresnel	O/W	Concert Pipe	Top light
283	51, 54, 58	2 @ 26° S4	O/W	Concert Pipe	Big Ticket Logos
284	287	S4 36, S4 26		FOH #2	Aisle House Left
285	286	S4 36, S4 26		FOH #2	Aisle House Right
286	X.498	1 @ LED Shadow 3 Channel		Box Boom	Black Light
287	X.495	1 @ LED Shadow 3 Channel		Box Boom	Black Light
288	X.505	1 @ Atomic 3000 4CH 60hz		Box Boom	Strobe
289	X.501	1 @ Atomic 3000 4CH 60hz		Box Boom	Strobe
290	X.489	1 @ Rosco Double Indexing Rotator			Gobo Rotator
291		1 @ Rosco Double Indexing Rotator			Gobo Rotator
292	X.509	1 @ MB DMX 2 Channel			MB Motor
293	X.511	2 @ Radiance Hazer 2 Channel		USC	Haze
294					
295					
296					
297	1	2 @ 26° SL	R46	FOH	Curtain Warmers
298	x.492	4 @ Works		Up/Down	Offstage Works
299	5.491 + 7.491	4 @ Works		1st, 2nd	DS Works
300	9.491 + 12.491	4 @ Works		3rd, 4th	US Works
301	253	1 @ 36° S4		SR Boom 1	DSR Side 1
302	223	1 @ 36° S4		SR Boom 2	MSR Side 1
303	229	1 @ 36° S4		SR Boom 3	MSR Side 1
304	235	1 @ 36° S4		SR Boom 4	USR Side 1
305	241	1 @ 36° S4		SR Boom 5	USR Side 1
306	247	1 @ 36° S4		SL Boom 1	DSL Side 1
307	199	1 @ 36° S4		SL Boom 2	MSL Side 1
308	205	1 @ 36° S4		SL Boom 3	MSL Side 1
309	211	1 @ 36° S4		SL Boom 4	USL Side 1
310	217	1 @ 36° S4		SL Boom 5	USL Side 1
311	254	1 @ 36° S4		SR Boom 1	DSR Side 2
312	224	1 @ 36° S4		SR Boom 2	MSR Side 2
313	230	1 @ 36° S4		SR Boom 3	MSR Side 2
314	236	1 @ 36° S4		SR Boom 4	USR Side 2
315	242	1 @ 36° S4		SR Boom 5	USR Side 2
316	248	1 @ 36° S4		SL Boom 1	DSL Side 2
317	200	1 @ 36° S4		SL Boom 2	MSL Side 2
318	206	1 @ 36° S4		SL Boom 3	MSL Side 2
319	212	1 @ 36° S4		SL Boom 4	USL Side 2
320	218	1 @ 36° S4		SL Boom 5	USL Side 2

321	255	1 @ 36° S4		SR Boom 1	DSR Mid
322	226	1 @ 36° S4		SR Boom 2	MSR Mid
323	232	1 @ 36° S4		SR Boom 3	MSR Mid
324	238	1 @ 36° S4		SR Boom 4	USR Mid
325	244	1 @ 36° S4		SR Boom 5	USR Mid
326	249	1 @ 36° S4		SL Boom 1	DSL Mid
327	202	1 @ 36° S4		SL Boom 2	MSL Mid
328	208	1 @ 36° S4		SL Boom 3	MSL Mid
329	214	1 @ 36° S4		SL Boom 4	USL Mid
330	220	1 @ 36° S4		SL Boom 5	USL Mid
331	256	1 @ 36° S4		SR Boom 1	DSR Shin
332	227	1 @ 36° S4		SR Boom 2	MSR Shin
333	233	1 @ 36° S4		SR Boom 3	MSR Shin
334	239	1 @ 36° S4		SR Boom 4	USR Shin
335	245	1 @ 36° S4		SR Boom 5	USR Shin
336	250	1 @ 36° S4		SL Boom 1	DSL Shin
337	203	1 @ 36° S4		SL Boom 2	MSL Shin
338	209	1 @ 36° S4		SL Boom 3	MSL Shin
339	215	1 @ 36° S4		SL Boom 4	USL Shin
340	221	1 @ 36° S4		SL Boom 5	USL Shin
341					
342					
343					
344					
345					
346					
347					
348					
349					
350					
351					
352					
353					
354					
355					
356					
357					
358					
359					
360					

361				
362				
363				
364				
365				
366				
367				
368				
369				
370				
371				
372				
373				
374				
375				
376				
377				
378				
379				
380				
381				
382				
383				
384				
385				
386				
387				
388				
389				
390				
391				
392				
393				
394				
395				
396				
397				
398				
399				
400				