



AUDITORIUM TECHNICAL INFORMATION

Effective: March 1, 2018

If this document is more than a year old please contact the technical office at (905) 338-4162 or visit www.oakvillecentre.ca/techinfo.htm

1. POLICIES AND PROCEDURES

- a) All cast and crew are asked to enter and exit through the stage door at the Southwest corner of the building.
- b) The stage door will be locked 15 minutes prior to the start of the performance. Alternatively clients can post security personnel at the stage door to control access.
- c) **Smoking is not permitted anywhere on the premises. This includes smoking written in the script as part of a play. Fake or unlit cigarettes should be used in their place.**
- d) **Alcoholic beverages are permitted only in licensed areas of the building. Not in the dressing rooms or on stage.**
- e) Food and beverages are not permitted on stage or in the auditorium. Water is permitted.
- f) Bulletin boards have been provided for displaying notices throughout the building. Notices taped to painted surfaces will be removed.
- g) A working Technical Supervisor is provided with every booking. Additional technical staff maybe arranged through the technical office with 2 weeks prior notice.
- h) Additional equipment and gobos can be provided with 2 weeks' notice at an additional charge.
- i) The fire curtain line must be able to be cleared within three minutes at any time during an event.
- j) The use of flammable solvents, open flame, or fire is not allowed on the premises without written permission from the Oakville Fire department.
- k) Only personnel authorized by the Technical Supervisor are permitted to operate Oakville Centre equipment; including the fly system and scissor lift.
- l) All touring crew and stagehands are required to wear safety foot ware on stage and in the loading areas during all load ins, set ups and strikes. Other PPE as necessary may be issued by the Supervisor on duty.
- m) Nailing, screwing or stapling to the stage floor is prohibited.
- n) The auditorium must be completely cleared of all personnel 30 minutes prior to the performance. The Technical Supervisor will act as liaison with the House Manager to open the house and will be notified by the House Manager when the house is in.
- o) In order to arrange tuning, we require two weeks' notice if you intend to use one of our pianos.
- p) Any production planning on using pyrotechnics must contact the technical office a minimum of 2 weeks (4 weeks is recommended) prior to the load in of the production. The Authority Having Jurisdiction in Oakville is the Oakville Fire Department.
- q) Any production planning on using auxiliary power must contact the technical department at least 2 weeks prior to the load in so that an electrician and ESA permits can be arranged.
- r) Any production planning on flying any scenic elements must provide details to the technical office at least 2 weeks prior to the load in.

- s) The Oakville Centre requires that a house announcement be made at the start of every show stating that the use of flash photography and recording devices is strictly prohibited as well as a reminder to silence all electronic devices.
- t) All belongings, set pieces and equipment must be removed at the end of the booking unless cleared with the technical department 1 week in advance. Additional cost may be incurred.
- u) The Oakville Centre will not fly performers in the theatre. If you are considering flying performers contact the theatre immediately.
- v) Persons needing wheel chair access to the stage should contact the theatre in advance of booking the theatre.
- w) Productions intending to use live animals in a performance must obtain a permit from the Town of Oakville. See Schedule 3 by-law number [2008-093](#). Please see the [permit application](#) for more information.
- x) Videotaping of performances must take place in prearranged locations in the auditorium or Studio. Cameras must remain in a fixed location **at all times** when there is an audience in the room.
- y) Wireless internet access is available in the building at no charge. It is subject to the internet access policy of the Town of Oakville and can be restrictive.

2. STAGE ACCESSORIES

Skyjack SJIII 3219 scissor lift
 6', 8', 10', & 12' step ladders
 12 - 4' x 8' x 6" risers riser legs are available – contact the technical department for details.
 4 - 4' x 4' x 6" risers
 4 - 2' x 8' x 6" risers
 Wenger Diva concert shell – walls only no ceiling panels
 50 Manhasset music stands
 36 Manhasset music stand lights
 70 Wenger Musician chairs black - straight back & armless
 4 black wooden stools 30" tall
 48" Clearsonic drum shield - 5 panels
 4 rubber backed dark grey carpets 4' x 8'
 2 Lecterns – solid oak with Littlelite and Countryman Isomax 4 microphone
 1 Steinway Model D 9' concert grand piano on stage only
 1 Kawai upright piano located in the orchestra pit.
Additional charge applies for mandatory tuning of piano prior to use.
 1 Roland RD800 stage piano
 1 Fender '65 Twin Reverb guitar amplifier
 1 Gallien-Krueger 1001RB-II bass amplifier & Gallien-Krueger 410RBH bass amplifier cabinet
 1 Yamaha Absolute Hybrid Maple 5 piece drum set with Zildjian A cymbal set
 5 rolls Harlequin Reversible black / grey dance floor (approx 44' x 2m per roll)
 2 Ultratec Radiance Haze Machines **(additional charge applies)**
 2 Ultratec Premier Fog Machines **(additional charge applies)**

3. WARDROBE

Laundry facilities are available at the theatre.
 The theatre has an iron, ironing board and professional steamer.

4. STAGE DIMENSIONS

Proscenium opening	width 38'	height 18'
Stage depth from apron to cyc	40'	
Stage depth from apron to main curtain	11'	
Stage right wing space	10'	
Stage left wing space	25'	

The loading dock is located upstage left at stage level. It is truck bed height.
 The door is 10' wide x 11'6" high

5. LIGHTING

There is a house lighting plot. Please see drawing for details. Please note that booms are not normally included in the house lighting plot.

a) Control

MA Lighting grandMA2 light with fader wing
MA Lighting on PC backup
DMX is distributed throughout the room using 2 Pathways Octo Nodes
288 Strand C21 dimmers (dimmer per circuit)
Dimmers reside on a Strand Shownet network.
Guest console access to the lighting network is provided through a Pathways Quattro node.

b) Circuits

All circuits are 20A 125V new style twistlock.
31 in the Front of House, 6 in SL box boom, 6 in SR box boom
10 on Concert pipe
24 on 1st electric line set # 4
24 on 2nd electric line set # 12
24 on 3rd electric line set # 19
12 on cyc electric line set # 23
18 on 4th electric line set # 27
32 on floor, 2 in the orchestra pit
60 circuits stage left wall at 22' AFF – 10 socapex
24 circuits stage right on cable drops from grid – 4 socapex
1 circuit on each electric is reserved for work lights

c) Instruments

33 Strand SL zoom 15-32 degree	575 W	located in the FOH catwalk only
6 ETC Source Four 14 degree	750 W	
20 ETC Source Four 19 degree	750 W	(4 permanently located in box boom)
20 ETC Source Four 26 degree	750 W	(2 permanently located in box boom)
56 ETC Source Four 36 degree	750 W	
12 ETC Source Four 50 degree	750 W	
6 ETC Source Four 70 degree	750 W	
6 ETC Source Four 90 degree	750 W	
4 ETC Source Four Lustr+ 19 degree	LED	(4 permanently located in box boom)
12 ETC Source Four Lustr+ 26 degree	LED	(2 permanently located in box boom)
20 ETC Source Four Lustr+ 36 degree	LED	
36 Selecon 7" Rama Fresnels	1 kW	c/w barn doors
36 ETC Source Four Pars	750 W	normally narrow lenses
6 Strand Iris 4 - 4 colour x 6 fixtures	1 kW	4 colours of cyc lights (line set #23)
27 Altman FC-1 ground row cyc lights	1 kW	3 colours of ground row
5 Altman Spectra Cyc 200	LED	cyc lights (line set #23)
8 Altman Spectra Cyc 100	LED	ground row
9 Vari*lite VL1100TS moving lights	1200 W	
3 Vari*lite VL1100TSD moving lights	1200 W	located on FOH winch ONLY
6 GLP Impression Spot One	LED	
2 Robert Juliat Roxie followspots	LED	located in booth only
2 Arri 3" Fresnels	300 W	c/w barn doors
2 Martin Atomic 3000 strobe lights		
2 Chauvet black lights	LED	
12 Elation Optiquad pars	LED	
12 Chauvet COLORado 2-Quad Zoom Tour pars		LED

Please note that all ETC Source Four lens tubes are the EDLT version.

d) Colour Media

We stock all Roscolux 2 digit and 3 digit colours.

e) Auxiliary Power

- 400A 3 phase 5 wire Down Stage Left with Cam-lock connectors
- 200A 3 phase 5 wire Down Stage Left with Cam-lock connectors
- 200A 3 phase 5 wire Down Stage Right
- 100A 3 phase 5 wire Up Stage Centre with Cam-lock connectors

***All Single Pin Electrical Tie-Ins require ESA Inspection At Additional Cost**

f) Accessories

- 10 - 8' or 12' Boom Stands
- 12 - Floor Plates
- 1 mirror ball 20" with American DJ DMX controlled mirror ball motor
- 2 Diversitronics ESM-DMX Strobe caps for ETC Source Fours ellipsoidal fixtures
- 12 City Theatrical drop in iris for ETC Source Fours (#2180)
- 6 City Theatrical drop in iris for Strand SL's (#2186)
- 24 A size City theatrical sandwich gobo holders (#2150)
- 24 B size City theatrical sandwich gobo holders (#2160)
- 24 A size City theatrical tab gobo holders (#2050)
- 24 B size City theatrical tab gobo holders (#2060)
- 12 B size City Theatrical glass gobo holders (#2173)

6. AUDIO

a) Front of House Mix Position

Soundcraft Vi4 Digital mixing console located in the rear of the theatre only
2 Denon DN-700C CD players

b) Booth

Soundcraft Si Performer 1
2 Denon DN-700C CD players
1 HHB CDR 830 BurnIT Plus CD recorder

c) Speaker System

The main speaker system is a flown d&b audiotechnik speaker system consisting of a T-Series centre line array (7 Ti10 speakers) with Q-Series fill boxes on each side (1 Qi7 and 1 Qi10 speaker per side). There are two (2) 27A subwoofers permanently mounted in the ceiling. There are seven (7) E5 speakers cut into the front edge of the stage as front fill. If required, there are two (2) V-SUB subwoofers that can be placed on each set of stairs to the house on either side of the stage. BSS Soundweb London (blue) controls all processing, time alignment and EQ. The speaker system has been setup using SIA Smaart Live. Speakers are powered by d&b d80 and d6 amplifiers.

d) Monitor System

Soundcraft Vi4 Digital mixing console
10 d&b audiotechnik M6 monitors
2 d&b audiotechnik M4 monitors
3 d&b audiotechnik d80 amplifiers
2 JBL PRX715XLF self powered subwoofer
4 JBL PRX712 speakers
1 Radial Engineering 56 channel Convertible V12 Modular 3 way mic split
Standard configuration is 11 mixes plus a listen mix.
Normal setup is stage right
6 Sennheiser 2000 wireless in-ear monitor transmitters (**additional charge applies**)
6 Sennheiser EK2000 c/w IE-4 earphones

e) Microphones

4 AKG C414 XLS (2 stereo matched pairs)
2 AKG C451E with CK1 capsules
4 AKG C391B
1 AKG D112
3 Audio Technica ATM 25
3 Audio Technica AT 4033
3 Crown PCC 160
4 Neumann KM184
6 Sennheiser MD 421-II
2 Sennheiser MD 441
2 Sennheiser e 609
1 Sennheiser e 901
2 Sennheiser e 902
8 Sennheiser e 904
4 Sennheiser e965
1 Shure Beta 52
4 Shure Beta 57
4 Shure SM 57
4 Shure Beta 58
2 Shure SM 58
1 Shure Beta 91
4 Shure Beta 98 D/S
1 Helpinstill Model 180 piano sensor installed in the Yamaha Grand CFIII 9' piano

f) DI's

12 Countryman Type 85 active DI's
4 Countryman Type 85S active stereo DI
2 Passive DI's

g) Wireless Microphones

12 Sennheiser 2000 wireless receivers (**additional charge applies**)
8 Sennheiser SKM 2000 c/w e965 capsule handheld transmitters
12 Sennheiser SK 2000 wireless belt packs
12 Countryman E6 headset mics for Sennheiser SK 2000 wireless belt packs
8 Sennheiser MKE – 2 Gold lavalier microphones for Sennheiser SK 2000 wireless belt packs

h) Microphone Stands

18 K&M tall boom stands (black)
8 K&M short boom stands (black)
6 K&M round base stands (black)

i) Program Sound and Paging

Paging is available from stage right and the booth.
Monitors are located in each dressing room, hallway, green room, technical office & control booth

j) Intercom

PS464 Clearcom power supply 4 channel main station (located in the booth)
2 Remote stations (located stage right & at the lighting console)
Clearcom Freespeak II wireless intercom with 6 belt packs
8 Clearcom belt packs
8 DT108 Beyer Headsets
2 Clearcom HS-6 handsets

k) Power

Technical power is provided specifically for the audio system
60 amp 3 phase disconnect c/w camlocks located upstage centre
2 – 20 amp 125/250 volt circuits are available stage right and stage left for monitor racks.
15 amp 125 volt circuits and 20 amp 125 volt circuits are also available.

7. VIDEO EQUIPMENT

a) Video Projectors

Christie Digital Roadster HD10K-M 1080 HD DLP projector (11,000 lumens) c/w Hanging frame
Christie Digital Lens ILS 1.16-1.49HD
or Christie Digital Lens ILS 1.8-2.6HD

b) Screens

10' x 18' Draper Truss-style Cinefold with front or rear projection surface

c) Playback

2 Denon DN-500BD Blu-ray players

8. FLY SYSTEM

a) Line Set Schedule

Line	Description	Notes	Height in feet	Width in feet	Distance to plaster line
0	Fire curtain				
1	Main curtain 50% fullness	Flies only – burgundy	22	46	0' 9"
2	1 Border		7	48	1' 7"
3	1 Leg - 2 panels 50% fullness		24	12	2' 1"
4	1 Electric	Truss batten			3' 0"
5	Spare				4' 6"
6	Spare				5' 5"
7	Spare				6' 10"
8	Spare	Truss batten			7' 7"
9	Spare				8' 3"
10	2 Border		12	48	9' 1"
11	2 Leg - 2 panels 50% fullness		24	16	9' 10"
12	2 Electric	Truss batten			11' 3"
13	Midstage traveler 50% fullness	Travels from stage right	24	46	12' 8"
14	Spare				13' 7"
15	Spare				14' 5"
16	Spare	Truss batten			15' 0"
17	3 Border		12	48	16' 9"
18	3 Leg - 2 panels 50% fullness		24	16	17' 7"
19	3 Electric	Truss batten			18' 9"
20	Spare				20' 3"
21	Spare	Truss batten			21' 1"
22	4 Border		12	48	21' 9"
23	Cyclorama electric	Truss batten			22' 5"
24	Stage right up/down (German)	Truss batten			
25	4 Legs - 2 panels 50% fullness		24	16	23' 8"
26	Spare				24' 5"
27	4 Electric	Truss batten			26' 0"
28	Upstage traveler 50% fullness	Travels from stage right	24	48	27' 0"
29	Spare				27' 10"
30	Spare				28' 8"
31	Cyclorama / White Scrim	Scrim is hung downstage	24	46	29' 6"
32	Stage left up/down (German)	Truss batten			
	Unobstructed upstage wall				32'0"

All drapery is 25 ounce black velour unless otherwise specified.

The cyclorama is white PVC with a white sharks tooth scrim hung on the same line set.

Maximum production payload per line-set: 1000lb (250lb single point)

Operating gallery is at stage level stage right.

b) Extra Drapery

Borders	2 - 8' h x 48' w black velour no fullness
Legs	1 pair - each panel 24' h x 12' w black velour 50% fullness
Scrim	1 - 22' h x 48' w sharks tooth black
Blackout drop	2 - 22' h x 24' w black velour no fullness
Silks	6 - 28' h x 5' w white silk drapes

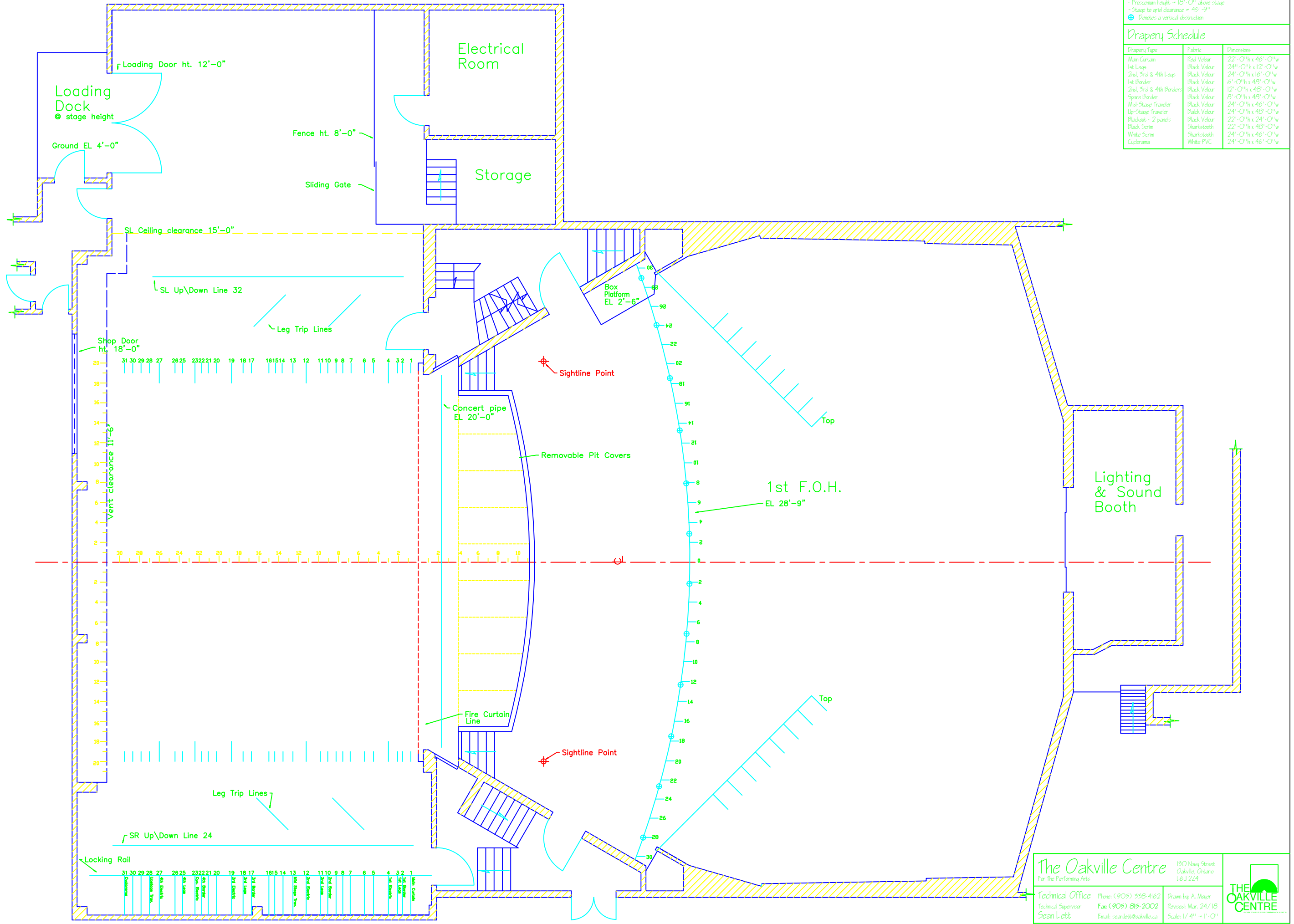
c) Rigging Information

A mesh grid allows for spot lines in only 4 positions on the horizontal plane of the stage, 22' 8" & 7'8" stage left of centre and 7'4" & 22'4" stage right of centre.

The theatre owns 12 - 1 ton beam clamps for hanging points.

Notes
 - Proscenium height = 18'-0" above stage
 - Stage to grid clearance = 45'-9"
 ⊕ Denotes a vertical obstruction

Drapery Schedule		
Drapery Type	Fabric	Dimensions
Main Curtain	Red Velour	22'-0" h x 46'-0" w
1st Legs	Black Velour	24'-0" h x 12'-0" w
2nd, 3rd & 4th Legs	Black Velour	24'-0" h x 16'-0" w
1st Border	Black Velour	6'-0" h x 48'-0" w
2nd, 3rd & 4th Borders	Black Velour	12'-0" h x 48'-0" w
Spare Border	Black Velour	6'-0" h x 48'-0" w
Mid-Stage Traveler	Black Velour	24'-0" h x 46'-0" w
Up-Stage Traveler	Black Velour	24'-0" h x 48'-0" w
Blackout - 2 panels	Black Velour	22'-0" h x 24'-0" w
White Scrim	Shanksooth	22'-0" h x 48'-0" w
Black Scrim	Shanksooth	24'-0" h x 46'-0" w
Cyclorama	White PVC	24'-0" h x 46'-0" w



The Oakville Centre
 For the Performing Arts
 150 Navy Street
 Oakville, Ontario
 L6J 2Z4

Technical Office: Phone: (905) 558-4162
 Technical Supervisor: Fax: (905) 815-2002
 Sean Lett: Email: sean.lett@oakville.ca

Drawn by: A. Mowat
 Revised: Mar. 24/18
 Scale: 1/4" = 1'-0"

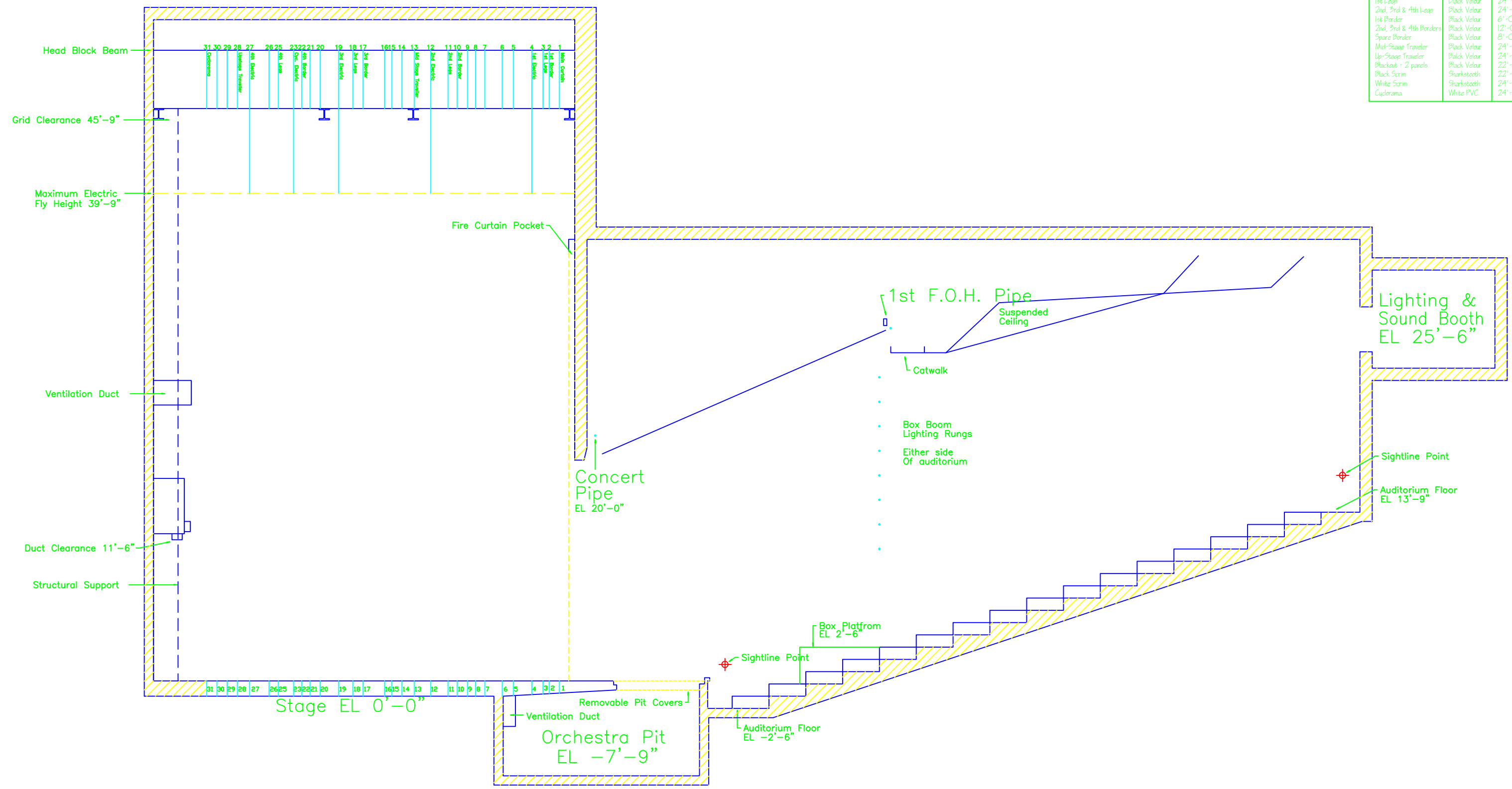
THE OAKVILLE CENTRE

Theatre Plan Drawing #1

Notes
 - All elevations taken from stage level
 - Proscenium height = 18'-0" above stage
 - Stage to grid clearance = 45'-9"

Drapery Schedule

Drapery Type	Fabric	Dimensions
Main Curtain	Red Velour	22'-0" h x 46'-0" w
1st Loop	Black Velour	24"-0" h x 12'-0" w
2nd, 3rd & 4th Loops	Black Velour	24"-0" h x 16'-0" w
1st Border	Black Velour	6'-0" h x 48'-0" w
2nd, 3rd & 4th Borders	Black Velour	12'-0" h x 48'-0" w
Spare Border	Black Velour	8'-0" h x 48'-0" w
Mid-Stage Traveler	Black Velour	24'-0" h x 46'-0" w
Up-Stage Traveler	Black Velour	24'-0" h x 48'-0" w
Blackout - 2 panels	Black Velour	22'-0" h x 24'-0" w
Black Scrim	Sharktooth	22'-0" h x 48'-0" w
White Scrim	Sharktooth	24'-0" h x 46'-0" w
Cyclorama	White PVC	24'-0" h x 46'-0" w



The Oakville Centre
 For The Performing Arts
 150 Navy Street
 Oakville, Ontario
 L6J 2Z4

Technical Office Phone: (905) 358-4162
 Technical Supervisor Fax: (905) 815-2002
 Sean Lett Email: sean.lett@oakville.ca

Drawn by: A. Mayer
 Revised: Mar. 24/18
 Scale: 1/4" = 1'-0"

THE OAKVILLE CENTRE
 FOR THE PERFORMING ARTS

Theatre Section Drawing #2

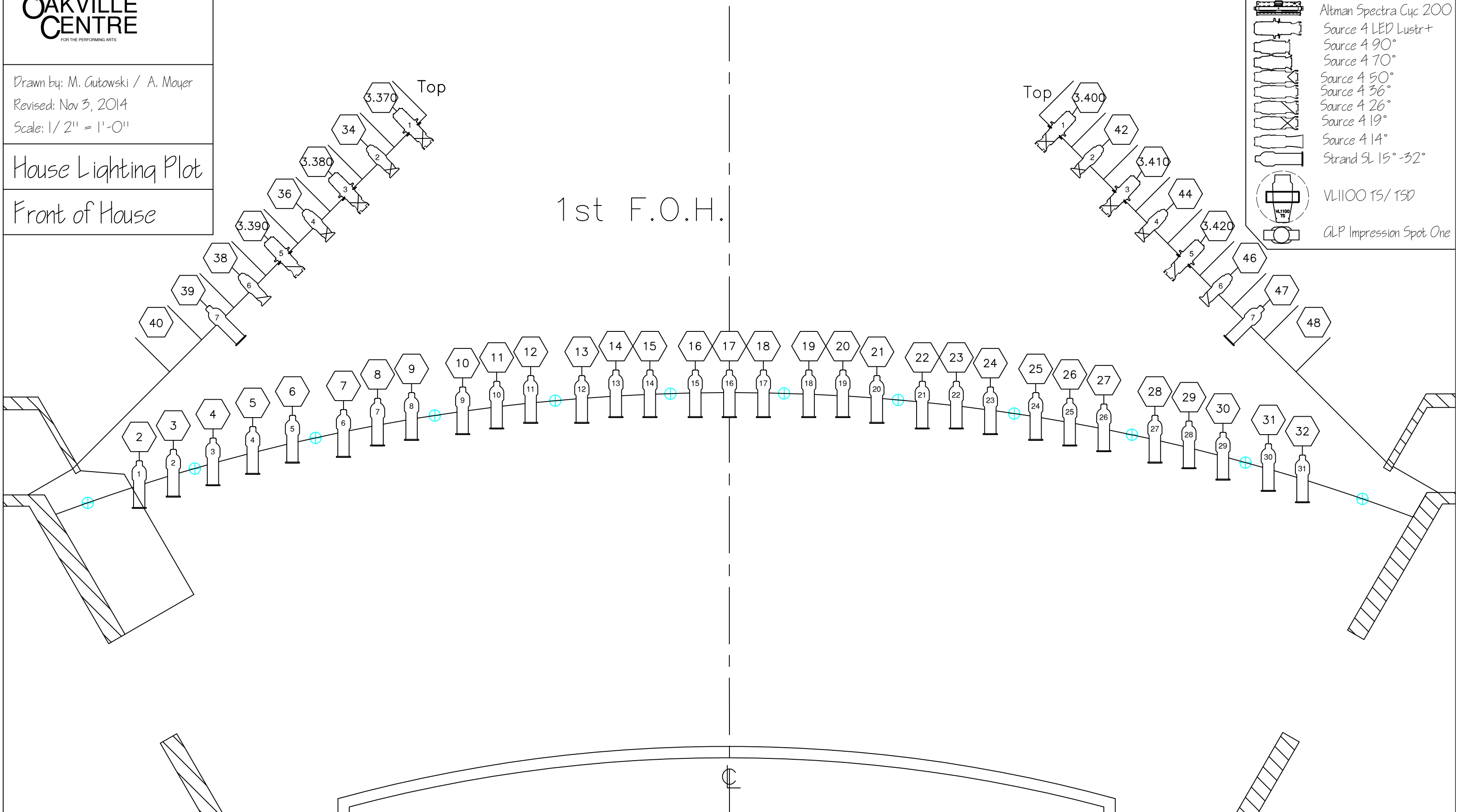


Drawn by: M. Gutowski / A. Moyer
Revised: Nov 3, 2014
Scale: 1/2" = 1'-0"

House Lighting Plot

Front of House

- ### Lighting Legend
- Elation 10° LED PAR
 - Source Four PAR Narrow
 - 6" Fresnel
 - Altman Spectra Cyc 200
 - Source 4 LED Lustr+
 - Source 4 90°
 - Source 4 70°
 - Source 4 50°
 - Source 4 36°
 - Source 4 26°
 - Source 4 19°
 - Source 4 14°
 - Strand SL 15°-32°
 - VL1100 TS/ TSD
 - GLP Impression Spot One





Technical Office

Supervisor of Technical Services

Sean Lett

Phone: (905) 338-4162

Fax: (905) 815-2002

Email: slett@oakville.ca

Drawn by: M. Gutowski

November 21, 2017

Scale: 1/2" = 1'-0"

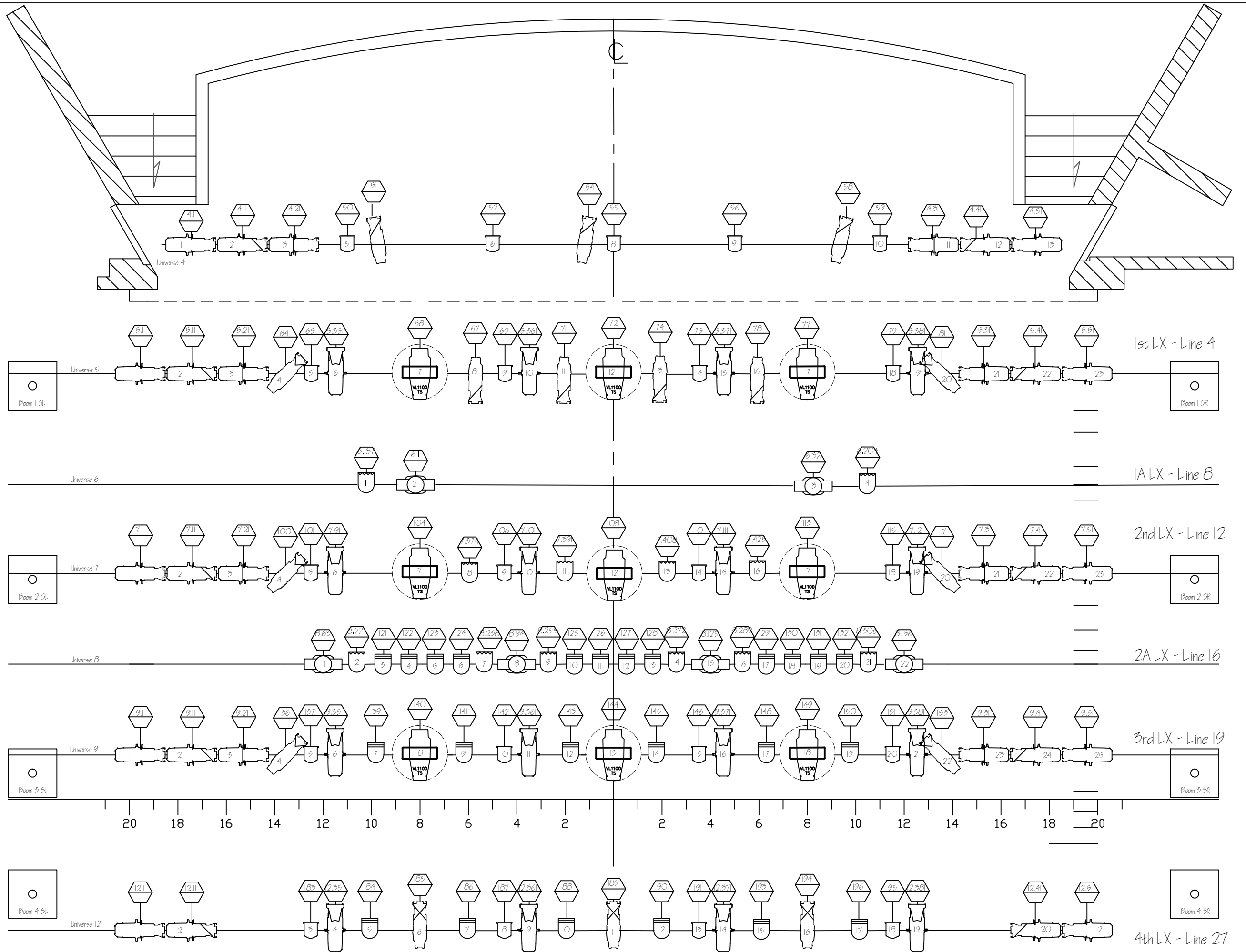
House Lighting Plot

Stage

Lighting Legend

- Colorado 2-Quad Z Tour
- Source Four PAR Narrow
- 6" Fresnel
- Altman Spectra Cyc 200
- Source 4 LED Lustr+
- Source 4 Lustr2 Fresnel
- Source 4 90°
- Source 4 70°
- Source 4 50°
- Source 4 36°
- Source 4 26°
- Source 4 19°
- Source 4 14°
- Strand SL 15°-32°
- VL1100 TS/TSO
- GLP Impression Spot One

- Circuit Number
- Channel Number
- Gobo
- Instrument Number





Technical Office

Supervisor of Technical Services

Sean Lett

Phone: (905) 338-4162

Fax: (905) 815-2002

Email: slett@oakville.ca

Drawn by: M. Gutowski





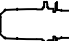
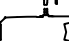
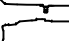


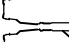
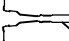
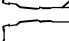


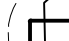
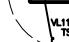
February 21, 2018

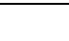



Scale: 1/2" = 1'-0"

House Lighting Plot

Booms

Lighting Legend

-  Colorado 2-Quad Z Tour
-  Source Four PAR Narrow
-  6" Fresnel
-  Altman Spectra Cyc 200
-  Source 4 LED Lustr+
-  Source 4 Lustr2 Fresnel
-  Source 4 90°
-  Source 4 70°
-  Source 4 50°
-  Source 4 36°
-  Source 4 26°
-  Source 4 19°
-  Source 4 14°
-  Strand SL 15°-32°
-  VL1100 TS/ TSD
-  GLP Impression Spot One

-  Circuit Number
-  Channel Number
-  Gobo
-  Instrument Number

Notes About Booms:

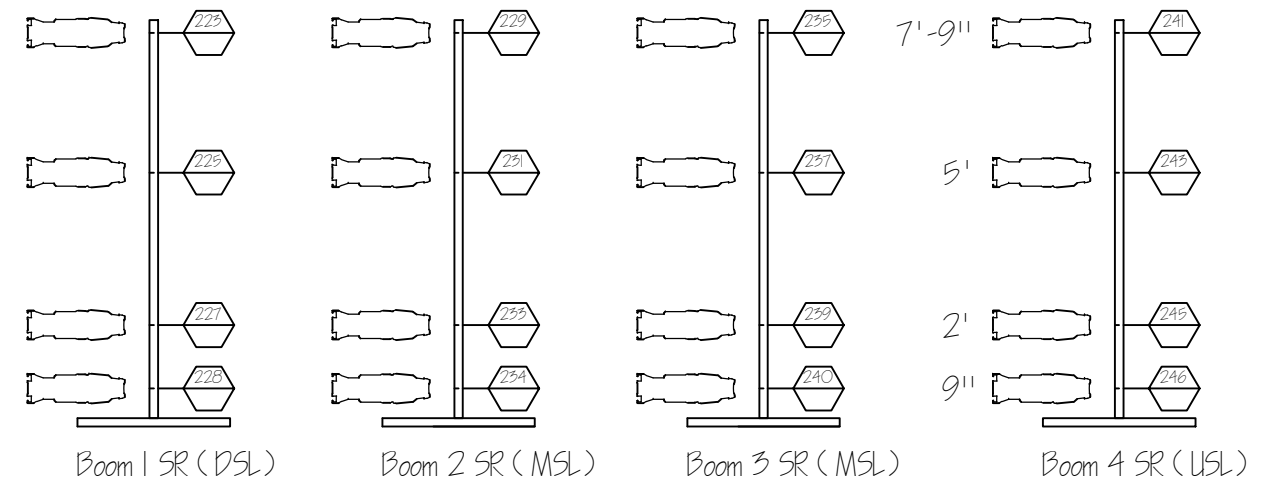
Booms are in storage and ready to be placed. House position is not necessary, and changes may be requested.

If you wish to use the booms you must request they are placed.

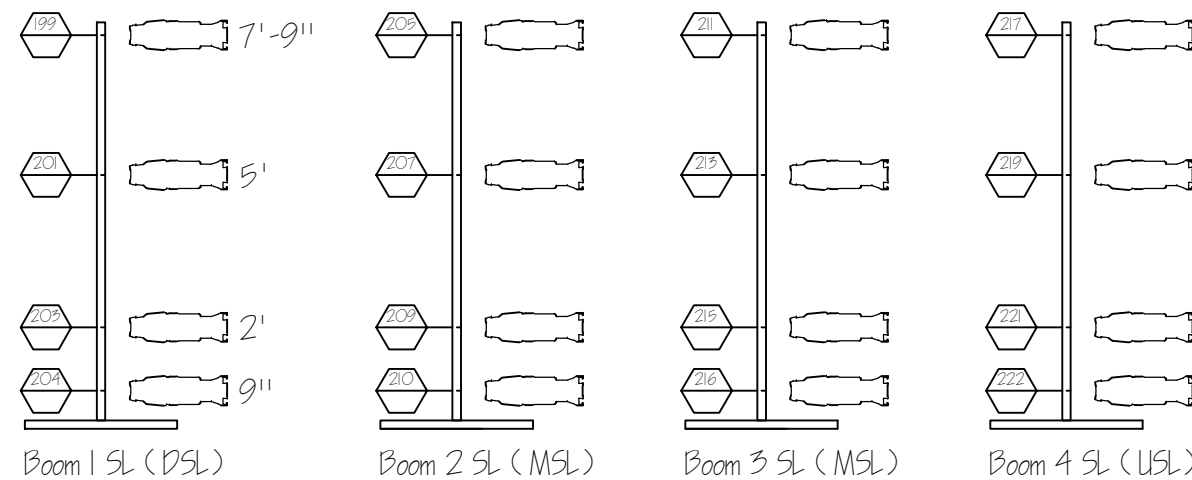
Subsequent time may be added to accommodate the placement and focus of the booms.

Standard placement is 24' offstage of centre, and slightly upstage of electrics to allow fly's to operate unencumbered.

Booms do not have any house color in them. House to provide shin guards to protect the bottom lamp



Stage Right Booms/ Circuits



Stage Left Booms/ Circuits

Channel	Dimmers	Instrument	Gel	Location	Focus
1	29	1 @ Strand Zoom 15°-32°		FOH #1	Wash warm SR
2	24	1 @ Strand Zoom 15°-32°		FOH #1	Wash warm MSR
3	18	1 @ Strand Zoom 15°-32°		FOH #1	Wash warm C
4	12	1 @ Strand Zoom 15°-32°		FOH #1	Wash warm MSL
5	6	1 @ Strand Zoom 15°-32°		FOH #1	Wash warm SL
6	28	1 @ Strand Zoom 15°-32°		FOH #1	Wash cool SR
7	22	1 @ Strand Zoom 15°-32°		FOH #1	Wash cool MSR
8	16	1 @ Strand Zoom 15°-32°		FOH #1	Wash cool C
9	10	1 @ Strand Zoom 15°-32°		FOH #1	Wash cool MSL
10	5	1 @ Strand Zoom 15°-32°		FOH #1	Wash cool SL
11	3.400	1 @ 19° S4 Lustr+		Box Boom	Box Boom LED HL High
12	3.410	1 @ 19° S4 Lustr+		Box Boom	Box Boom LED HL Mid
13	3.420	1 @ 26° S4 Lustr+		Box Boom	Box Boom LED HL Low
14	3.370	1 @ 19° S4 Lustr+		Box Boom	Box Boom LED HR High
15	3.380	1 @ 19° S4 Lustr+		Box Boom	Box Boom LED HR Mid
16	3.390	1 @ 26° S4 Lustr+		Box Boom	Box Boom LED HR Low
17	42	1 @ 19° S4		Box Boom	Box Boom Warm HL High
18	44	1 @ 19° S4		Box Boom	Box Boom Warm HL Mid
19	46	1 @ 26° S4		Box Boom	Box Boom Warm HL Low
20	34	1 @ 19° S4		Box Boom	Box Boom Warm HR High
21	36	1 @ 19° S4		Box Boom	Box Boom Warm HR Mid
22	38	1 @ 26° S4		Box Boom	Box Boom Warm HR Low
23	47	1 @ 26° S4		Box Boom	Bottom Rung Spec
24	39	1 @ 26° S4		Box Boom	Bottom Rung Spec
25	2.343	1 @ Varilite TSD		FOH #1A	FOH HR VL Face
26	2.316	1 @ Varilite TSD		FOH #1A	FOH C VL Face
27	2.289	1 @ Varilite TSD		FOH #1A	FOH HL VL Face
28					
29					
30					
31	27	1 @ Strand Zoom 15°-32°		FOH #1	Face Special 1 SR
32	25	1 @ Strand Zoom 15°-32°		FOH #1	Face Special 2
33	23	1 @ Strand Zoom 15°-32°		FOH #1	Face Special 3
34	21	1 @ Strand Zoom 15°-32°		FOH #1	Face Special 4
35	20	1 @ Strand Zoom 15°-32°		FOH #1	Face Special 5
36	19	1 @ Strand Zoom 15°-32°		FOH #1	Face Special 6
37	17	1 @ Strand Zoom 15°-32°		FOH #1	Face Special 7 CS
38	15	1 @ Strand Zoom 15°-32°		FOH #1	Face Special 8
39	14	1 @ Strand Zoom 15°-32°		FOH #1	Face Special 9
40	13	1 @ Strand Zoom 15°-32°		FOH #1	Face Special 10

41	11	1 @ Strand Zoom 15°-32°		FOH #1	Face Special 11
42	9	1 @ Strand Zoom 15°-32°		FOH #1	Face Special 12
43	8	1 @ Strand Zoom 15°-32°		FOH #1	Face Special 13
44	7	1 @ Strand Zoom 15°-32°		FOH #1	Face Special 14SL
45	78	1 @ 26° S4		1st LX	Face Special USR
46	74	1 @ 26° S4		1st LX	Face Special USRC
47	71	1 @ 26° S4		1st LX	Face Special USLC
48	67	1 @ 26° S4		1st LX	Face Special USL
49					
50					
51	4.51	1 @ 36° S4 Lustr+		Concert Pipe	CP Tip SR Offstage
52	4.41	1 @ 26° S4 Lustr+		Concert Pipe	CP Tip SR Onstage
53	5.51	1 @ 36° S4 Lustr+		1st LX	1st Tip SR Offstage
54	5.41	1 @ 26° S4 Lustr+		1st LX	1st Tip SR Onstage
55	7.51	1 @ 36° S4 Lustr+		2nd LX	2nd Tip SR Offstage
56	7.41	1 @ 26° S4 Lustr+		2nd LX	2nd Tip SR Onstage
57	9.51	1 @ 36° S4 Lustr+		3rd LX	3rd Tip SR Offstage
58	9.41	1 @ 26° S4 Lustr+		3rd LX	3rd Tip SR Onstage
59	12.51	1 @ 36° S4 Lustr+		4th LX	4th Tip SR Offstage
60	12.41	1 @ 26° S4 Lustr+		4th LX	4th Tip SR Onstage
61	4.11	1 @ 26° S4 Lustr+		Concert Pipe	CP Tip SL Onstage
62	4.1	1 @ 36° S4 Lustr+		Concert Pipe	CP Tip SL Offstage
63	5.11	1 @ 26° S4 Lustr+		1st LX	1st Tip SL Onstage
64	5.1	1 @ 36° S4 Lustr+		1st LX	1st Tip SL Offstage
65	7.11	1 @ 26° S4 Lustr+		2nd LX	2nd Tip SL Onstage
66	7.1	1 @ 36° S4 Lustr+		2nd LX	2nd Tip SL Offstage
67	9.11	1 @ 26° S4 Lustr+		3rd LX	3rd Tip SL Onstage
68	9.1	1 @ 36° S4 Lustr+		3rd LX	3rd Tip SL Offstage
69	12.11	1 @ 26° S4 Lustr+		4th LX	4th Tip SL Onstage
70	12.1	1 @ 36° S4 Lustr+		4th LX	4th Tip SL Offstage
71	4.31	1 @ 36° S4 Lustr+		Concert Pipe	CP B/U SR
72	5.31	1 @ 36° S4 Lustr+		1st LX	1st B/U SR
73	7.31	1 @ 36° S4 Lustr+		2nd LX	2nd B/U SR
74	9.31	1 @ 36° S4 Lustr+		3rd LX	3rd B/U SR
75	4.21	1 @ 36° S4 Lustr+		Concert Pipe	CP B/U SL
76	5.21	1 @ 36° S4 Lustr+		1st LX	1st B/U SL
77	7.21	1 @ 36° S4 Lustr+		2nd LX	2nd B/U SL
78	9.21	1 @ 36° S4 Lustr+		3rd LX	3rd B/U SL
79					
80					

81	81	1 @ 50° S4		1st LX	1st 50 DSR
82	117	1 @ 50° S4		2nd LX	2nd 50 MSR
83	153	1 @ 50° S4		3rd LX	3rd 50 USR
84	64	1 @ 50° S4		1st LX	1st 50 DSL
85	100	1 @ 50° S4		2nd LX	2nd 50 MSL
86	136	1 @ 50° S4		3rd LX	3rd 50 USL
87	194	1 @ 19° S4		4th LX	USR Back Special USR
88	189	1 @ 19° S4		4th LX	USC Back Special USC
89	185	1 @ 19° S4		4th LX	USL Back Special USL
90					
91	5.381	1 @ ETC LED Series 2 Tungsten HD		1st LX	1st LED Back SR
92	5.371	1 @ ETC LED Series 2 Tungsten HD		1st LX	1st LED Back CSR
93	5.361	1 @ ETC LED Series 2 Tungsten HD		1st LX	1st LED Back CSL
94	5.351	1 @ ETC LED Series 2 Tungsten HD		1st LX	1st LED Back SL
95	7.121	1 @ ETC LED Series 2 Tungsten HD		2nd LX	2nd LED Back SR
96	7.111	1 @ ETC LED Series 2 Tungsten HD		2nd LX	2nd LED Back CSR
97	7.101	1 @ ETC LED Series 2 Tungsten HD		2nd LX	2nd LED Back CSL
98	7.91	1 @ ETC LED Series 2 Tungsten HD		2nd LX	2nd LED Back SL
99	9.381	1 @ ETC LED Series 2 Tungsten HD		3rd LX	3rd LED Back SR
100	9.371	1 @ ETC LED Series 2 Tungsten HD		3rd LX	3rd LED Back CSR
101	9.361	1 @ ETC LED Series 2 Tungsten HD		3rd LX	3rd LED Back CSL
102	9.351	1 @ ETC LED Series 2 Tungsten HD		3rd LX	3rd LED Back SL
103	12.381	1 @ ETC LED Series 2 Tungsten HD		4th LX	4th LED Back SR
104	12.371	1 @ ETC LED Series 2 Tungsten HD		4th LX	4th LED Back CSR
105	12.361	1 @ ETC LED Series 2 Tungsten HD		4th LX	4th LED Back CSL
106	12.351	1 @ ETC LED Series 2 Tungsten HD		4th LX	4th LED Back SL
107					
108					
109					
110					
111	79	1 @ 6" Fresnels	V99	1st LX	1st Cool Back SR
112	75	1 @ 6" Fresnels	V99	1st LX	1st Cool Back CSR
113	69	1 @ 6" Fresnels	V99	1st LX	1st Cool Back CSL
114	65	1 @ 6" Fresnels	V99	1st LX	1st Cool Back SL
115	115	1 @ 6" Fresnels	V99	2nd LX	2nd Cool Back SR
116	110	1 @ 6" Fresnels	V99	2nd LX	2nd Cool Back CSR
117	106	1 @ 6" Fresnels	V99	2nd LX	2nd Cool Back CSL
118	101	1 @ 6" Fresnels	V99	2nd LX	2nd Cool Back SL
119	151	1 @ 6" Fresnels	V99	3rd LX	3rd Cool Back SR
120	146	1 @ 6" Fresnels	V99	3rd LX	3rd Cool Back CSR

121	142	1 @ 6" Fresnels	V99	3rd LX	3rd Cool Back CSL
122	137	1 @ 6" Fresnels	V99	3rd LX	3rd Cool Back SL
123	195	1 @ 6" Fresnels	V99	4th LX	4th Cool Back SR
124	191	1 @ 6" Fresnels	V99	4th LX	4th Cool Back CSR
125	187	1 @ 6" Fresnels	V99	4th LX	4th Cool Back CSL
126	183	1 @ 6" Fresnels	V99	4th LX	4th Cool Back SL
127					
128					
129					
130					
131	131	1 @ S4 Par - Narrow		Line 16 in	Pars 1 SR IN
132	130	1 @ S4 Par - Narrow		Line 16 in	Pars 1 MSR IN
133	127	1 @ S4 Par - Narrow		Line 16 in	Pars 1 CSR IN
134	126	1 @ S4 Par - Narrow		Line 16 in	Pars 1 CSL IN
135	123	1 @ S4 Par - Narrow		Line 16 in	Pars 1 MSL IN
136	122	1 @ S4 Par - Narrow		Line 16 in	Pars 1 SL IN
137	132	1 @ S4 Par - Narrow		Line 16 out	Pars 2 SR OUT
138	129	1 @ S4 Par - Narrow		Line 16 out	Pars 2 MSR OUT
139	128	1 @ S4 Par - Narrow		Line 16 out	Pars 2 CSR OUT
140	125	1 @ S4 Par - Narrow		Line 16 out	Pars 2 CSL OUT
141	124	1 @ S4 Par - Narrow		Line 16 out	Pars 2 MSL OUT
142	121	1 @ S4 Par - Narrow		Line 16 out	Pars 2 SL OUT
143	150	1 @ S4 Par - Narrow		3rd LX	Pars 3 SR
144	148	1 @ S4 Par - Narrow		3rd LX	Pars 3 MSR
145	145	1 @ S4 Par - Narrow		3rd LX	Pars 3 CSR
146	143	1 @ S4 Par - Narrow		3rd LX	Pars 3 CSL
147	141	1 @ S4 Par - Narrow		3rd LX	Pars 3 MSL
148	139	1 @ S4 Par - Narrow		3rd LX	Pars 3 SL
149	196	1 @ S4 Par - Narrow		4th LX	Pars 4 SR
150	193	1 @ S4 Par - Narrow		4th LX	Pars 4 MSR
151	190	1 @ S4 Par - Narrow		4th LX	Pars 4 CSR
152	188	1 @ S4 Par - Narrow		4th LX	Pars 4 CSL
153	186	1 @ S4 Par - Narrow		4th LX	Pars 4 MSL
154	184	1 @ S4 Par - Narrow		4th LX	Pars 4 SL
155					
156					
157					
158					
159					
160					

161	6.204	1 @ Chauvet COLORado 2-Quad Z Tour	LED	1A	LED Pars SR
162	6.187	1 @ Chauvet COLORado 2-Quad Z Tour	LED	1A	LED Pars SL
163	7.425	1 @ Chauvet COLORado 2-Quad Z Tour	LED	2nd LX	LED Pars SR
164	7.408	1 @ Chauvet COLORado 2-Quad Z Tour	LED	2nd LX	LED Pars CSR
165	7.391	1 @ Chauvet COLORado 2-Quad Z Tour	LED	2nd LX	LED Pars CSL
166	7.374	1 @ Chauvet COLORado 2-Quad Z Tour	LED	2nd LX	LED Pars SL
167	8.306	1 @ Chauvet COLORado 2-Quad Z Tour	LED	2A	LED Pars SR
168	8.289	1 @ Chauvet COLORado 2-Quad Z Tour	LED	2A	LED Pars MSR
169	8.272	1 @ Chauvet COLORado 2-Quad Z Tour	LED	2A	LED Pars CSR
170	8.255	1 @ Chauvet COLORado 2-Quad Z Tour	LED	2A	LED Pars CSL
171	8.238	1 @ Chauvet COLORado 2-Quad Z Tour	LED	2A	LED Pars MSL
172	8.221	1 @ Chauvet COLORado 2-Quad Z Tour	LED	2A	LED Pars SL
173					
174					
175					
176					
177					
178					
179					
180					
181	13.78	1 @ Opti Quad Par 7 Channel	LED	Deck	LED Pars Deck
182	13.71	1 @ Opti Quad Par 7 Channel	LED	Deck	LED Pars Deck
183	13.64	1 @ Opti Quad Par 7 Channel	LED	Deck	LED Pars Deck
184	13.57	1 @ Opti Quad Par 7 Channel	LED	Deck	LED Pars Deck
185	13.5	1 @ Opti Quad Par 7 Channel	LED	Deck	LED Pars Deck
186	13.43	1 @ Opti Quad Par 7 Channel	LED	Deck	LED Pars Deck
187	13.36	1 @ Opti Quad Par 7 Channel	LED	Deck	LED Pars Deck
188	13.29	1 @ Opti Quad Par 7 Channel	LED	Deck	LED Pars Deck
189	13.22	1 @ Opti Quad Par 7 Channel	LED	Deck	LED Pars Deck
190	13.15	1 @ Opti Quad Par 7 Channel	LED	Deck	LED Pars Deck
191	13.8	1 @ Opti Quad Par 7 Channel	LED	Deck	LED Pars Deck
192	13.1	1 @ Opti Quad Par 7 Channel	LED	Deck	LED Pars Deck
193					
194					
195					
196					
197					
198					
199					
200					

201	5.145 + 1.77	1 @ Varilite TS	RGB	1st LX	Back Special 1 DSR
202	5.118 + 1.72	1 @ Varilite TS	RGB	1st LX	Back Special 2 DSC
203	5.91 + 1.68	1 @ Varilite TS	RGB	1st LX	Back Special 3 DSL
204	7.226 + 1.113	1 @ Varilite TS	RGB	2nd LX	Back Special 4 MSR
205	7.199 + 1.108	1 @ Varilite TS	RGB	2nd LX	Back Special 5 MSC
206	7.172 + 1.104	1 @ Varilite TS	RGB	2nd LX	Back Special 6 MSL
207	9.307 + 1.149	1 @ Varilite TS	RGB	3rd LX	Back Special 7 USR
208	9.280 + 1.144	1 @ Varilite TS	RGB	3rd LX	Back Special 8 USC
209	9.253 + 1.140	1 @ Varilite TS	RGB	3rd LX	Back Special 9 USL
210					
211	6.32	1 @ Impression Spot One	LED	Line 8	GLP #2 DSR
212	6.1	1 @ Impression Spot One	LED	Line 8	GLP #1 DSL
213	8.156	1 @ Impression Spot One	LED	Line 16	GLP #6 USR
214	8.125	1 @ Impression Spot One	LED	Line 16	GLP #5 UMSR
215	8.94	1 @ Impression Spot One	LED	Line 16	GLP #4 UMSL
216	8.63	1 @ Impression Spot One	LED	Line 16	GLP #3 USL
217					
218					
219					
220					
221	271, 276, 281	6 @ Altman FC1	RGB	Deck	Groundrow SR
222	270, 275, 280	6 @ Altman FC1	RGB	Deck	Groundrow CSR
223	269, 274, 279	6 @ Altman FC1	RGB	Deck	Groundrow CS
224	268, 273, 278	6 @ Altman FC1	RGB	Deck	Groundrow CSL
225	267, 272, 277	3 @ Altman FC1	RGB	Deck	Groundrow SL
226					
227					
228					
229					
230					
231	177, 178, 179, 180	8 @ Iris	RGBA	Cyc LX	Top Cyc SR
232	173, 174, 175, 176	8 @ Iris	RGBA	Cyc LX	Top Cyc C
233	169, 170, 171, 172	8 @ Iris	RGBA	Cyc LX	Top Cyc SL
234					
235					
236					
237					
238					
239					
240					

241	13.245	1 @ Spectra 100 Cyc	LED	Deck	LED Ground Row SR
242	13.235	1 @ Spectra 100 Cyc	LED	Deck	LED Ground Row MSR
243	13.225	1 @ Spectra 100 Cyc	LED	Deck	LED Ground Row CMSR
244	13.215	1 @ Spectra 100 Cyc	LED	Deck	LED Ground Row CSR
245	13.205	1 @ Spectra 100 Cyc	LED	Deck	LED Ground Row CSL
246	13.195	1 @ Spectra 100 Cyc	LED	Deck	LED Ground Row CMSL
247	13.185	1 @ Spectra 100 Cyc	LED	Deck	LED Ground Row MSL
248	13.175	1 @ Spectra 100 Cyc	LED	Deck	LED Ground Row SL
249					
250					
251	11.366	1 @ Spectra 200 cyc	LED	Cyc LX	LED CYC SR
252	11.358	1 @ Spectra 200 cyc	LED	Cyc LX	LED CYC MSR
253	11.350	1 @ Spectra 200 cyc	LED	Cyc LX	LED CYC C
254	11.342	1 @ Spectra 200 cyc	LED	Cyc LX	LED CYC MSL
255	11.334	1 @ Spectra 200 cyc	LED	Cyc LX	LED CYC SL
256					
257					
258					
259					
260					
261					
262					
263					
264					
265					
266					
267					
268					
269					
270					
271					
272					
273					
274					
275					
276					
277					
278					
279					
280					

281	26	1 @ Strand Zoom 15°-32°		FOH #1	M/C Special SR
282	52, 53, 55, 56, 57	5 @ 6" Fresnel	O/W	Concert Pipe	Top light
283	51, 54, 58	2 @ 26° S4	O/W	Concert Pipe	Big Ticket Logos
284	287	S4 36, S4 26		FOH #2	Aisle House Left
285	286	S4 36, S4 26		FOH #2	Aisle House Right
286	X.498	1 @ LED Shadow 3 Channel		Box Boom	Black Light
287	X.495	1 @ LED Shadow 3 Channel		Box Boom	Black Light
288	X.505	1 @ Atomic 3000 4CH 60hz		Box Boom	Strobe
289	X.501	1 @ Atomic 3000 4CH 60hz		Box Boom	Strobe
290	X.489	1 @ UltraTec Fogger			Fogger
291	x.493	1 @ UltraTec Fogger			Fogger
292	X.509	1 @ MB DMX 2 Channel			MB Motor
293	X.511	2 @ Radiance Hazer 2 Channel		USC	Haze
294	13.485	1 @ Ultratech FOG 1		Deck	FOG 1
295	13.487	1 @ Ultratech FOG 2		Deck	FOG 2
296					
297	1	2 @ 26° SL	R46	FOH	Curtain Warmers
298	x.492	4 @ Works		Up/Down	Offstage Works
299	5.491 + 7.491	4 @ Works		1st, 2nd	DS Works
300	9.491 + 12.491	4 @ Works		3rd, 4th	US Works
301	253	1 @ 36° S4		SR Prosc Boom	DSR Side 1
302	223	1 @ 36° S4		SR Boom 1	MSR Side 1
303	229	1 @ 36° S4		SR Boom 2	MSR Side 1
304	235	1 @ 36° S4		SR Boom 3	USR Side 1
305	241	1 @ 36° S4		SR Boom 4	USR Side 1
306	247	1 @ 36° S4		SL Prosc Boom	DSL Side 1
307	199	1 @ 36° S4		SL Boom 1	MSL Side 1
308	205	1 @ 36° S4		SL Boom 2	MSL Side 1
309	211	1 @ 36° S4		SL Boom 3	USL Side 1
310	217	1 @ 36° S4		SL Boom 4	USL Side 1
311	254	1 @ 36° S4		SR Prosc Boom	DSR Side 2
312	225	1 @ 36° S4		SR Boom 1	MSR Side 2
313	231	1 @ 36° S4		SR Boom 2	MSR Side 2
314	237	1 @ 36° S4		SR Boom 3	USR Side 2
315	243	1 @ 36° S4		SR Boom 4	USR Side 2
316	248	1 @ 36° S4		SL Prosc Boom	DSL Side 2
317	201	1 @ 36° S4		SL Boom 1	MSL Side 2
318	207	1 @ 36° S4		SL Boom 2	MSL Side 2
319	213	1 @ 36° S4		SL Boom 3	USL Side 2
320	219	1 @ 36° S4		SL Boom 4	USL Side 2

321	255	1 @ 36° S4		SR Prosc Boom	DSR Mid
322	227	1 @ 36° S4		SR Boom 1	MSR Mid
323	233	1 @ 36° S4		SR Boom 2	MSR Mid
324	239	1 @ 36° S4		SR Boom 3	USR Mid
325	245	1 @ 36° S4		SR Boom 4	USR Mid
326	249	1 @ 36° S4		SL Prosc Boom	DSL Mid
327	203	1 @ 36° S4		SL Boom 1	MSL Mid
328	209	1 @ 36° S4		SL Boom 2	MSL Mid
329	215	1 @ 36° S4		SL Boom 3	USL Mid
330	221	1 @ 36° S4		SL Boom 4	USL Mid
331	256	1 @ 36° S4		SR Prosc Boom	DSR Shin
332	228	1 @ 36° S4		SR Boom 1	MSR Shin
333	234	1 @ 36° S4		SR Boom 2	MSR Shin
334	240	1 @ 36° S4		SR Boom 3	USR Shin
335	246	1 @ 36° S4		SR Boom 4	USR Shin
336	250	1 @ 36° S4		SL Prosc Boom	DSL Shin
337	204	1 @ 36° S4		SL Boom 1	MSL Shin
338	210	1 @ 36° S4		SL Boom 2	MSL Shin
339	216	1 @ 36° S4		SL Boom 3	USL Shin
340	222	1 @ 36° S4		SL Boom 4	USL Shin
341					
342					
343					
344					
345					
346					
347					
348					
349					
350					
351					
352					
353					
354					
355					
356					
357					
358					
359					
360					

361					
362					
363					
364					
365					
366					
367					
368					
369					
370					
371					
372					
373					
374					
375					
376					
377					
378					
379					
380					
381					
382					
383					
384					
385					
386					
387					
388					
389					
390					
600					
601	13.150	1 @ Astra S7 Dim Spot	RGB	Deck	Wireless Par Spot/Accent
602	13.143	1 @ Astra S7 Dim Spot	RGB	Deck	Wireless Par Spot/Accent
603	13.136	1 @ Astra S7 Dim Spot	RGB	Deck	Wireless Par Spot/Accent
604	13.129	1 @ Astra S7 Dim Spot	RGB	Deck	Wireless Par Spot/Accent
605	13.122	1 @ Astra S7 Dim Spot	RGB	Deck	Wireless Par Spot/Accent
606	13.115	1 @ Astra S7 Dim Spot	RGB	Deck	Wireless Par Spot/Accent
607	13.108	1 @ Astra S7 Dim Spot	RGB	Deck	Wireless Par Spot/Accent
608	13.101	1 @ Astra S7 Dim Spot	RGB	Deck	Wireless Par Spot/Accent
609					
610					
611	18.1	1 @ Follow Spot #1		BOOTH	R.J. Roxie LED
612	18.3	1 @ Follow Spot #2		BOOTH	R.J. Roxie LED
613	18.5	1 @ Follow Spot #3		BOOTH	R.J. Roxie LED

